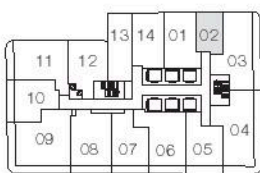
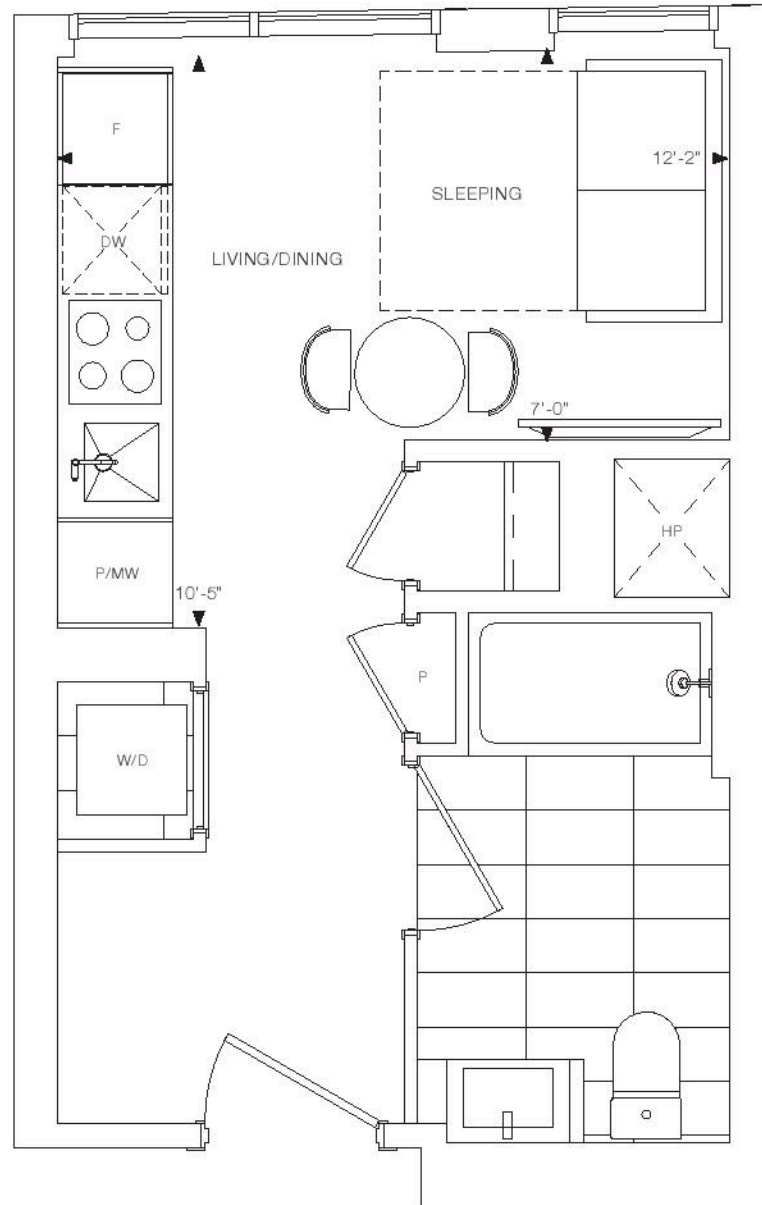




ELM  
ON  
YONGE

# S1a

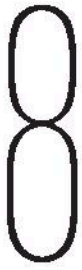
STUDIO  
INTERIOR: 292 SQ. FT.  
TOTAL: 292 SQ. FT.



LEVEL 17-24



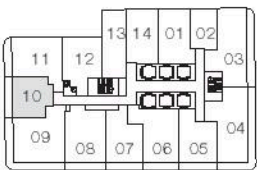
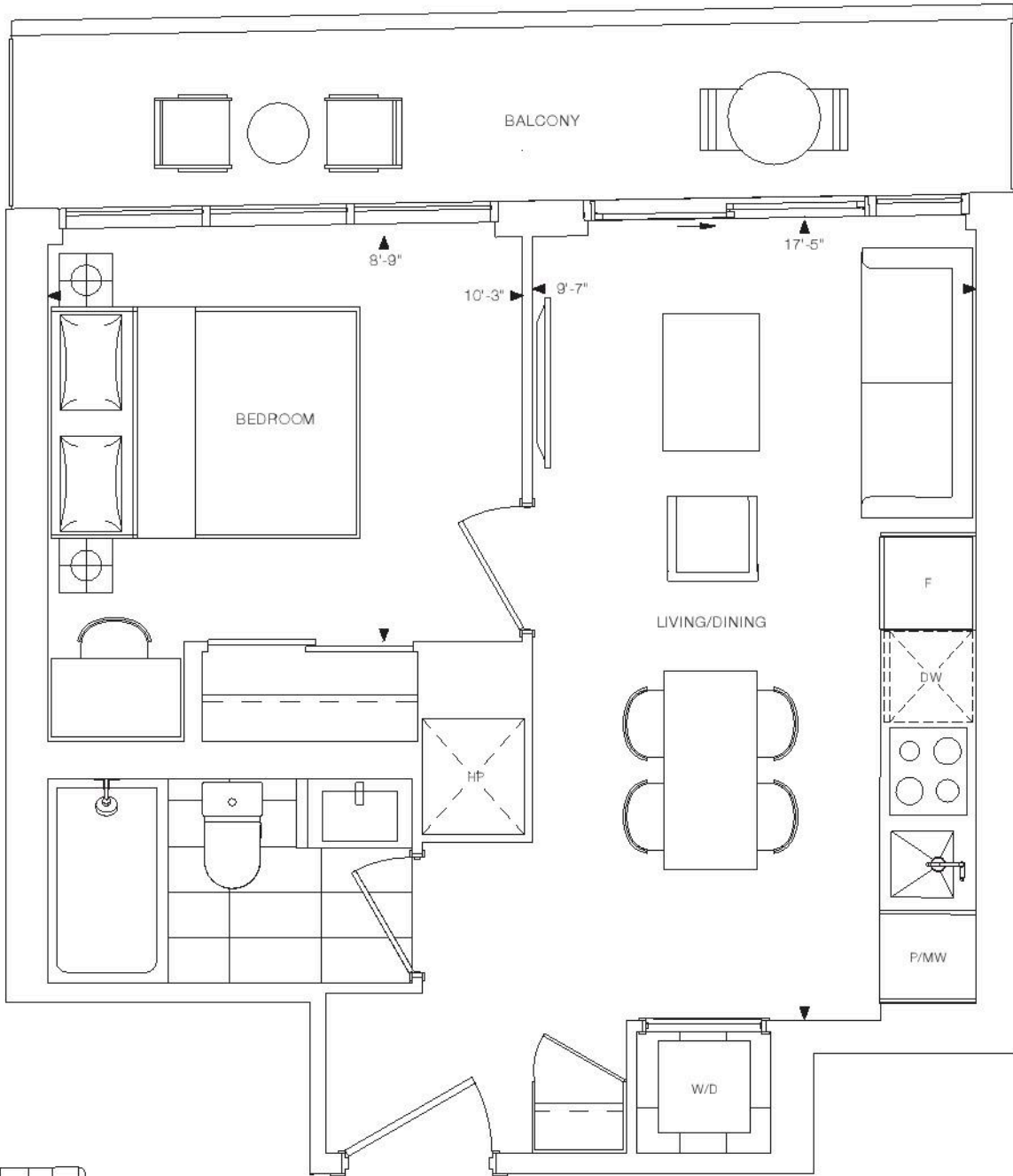
Dimensions, specifications, layouts, and materials are approximate only and are subject to change without notice. Window sizes and locations may vary. Furniture is for illustration purposes only and does not necessarily reflect the electrical plan for the suite. Suites are sold unfurnished. Actual useable floor space within the unit may be different from stated floor areas or dimensions on this plan. For more information on the method used for calculating the floor area of any unit, please refer to Home Construction Regulatory Authority Directive - Floor Area Calculations. Balcony and terrace area is approximate and not included in net suite area. E&O.E.



ELM  
ON  
YONGE

# 1A

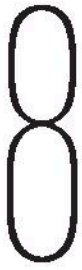
1 BEDROOM  
INTERIOR: 420 SQ. FT.  
EXTERIOR: 89 SQ. FT.  
TOTAL: 509 SQ. FT.



LEVEL 14



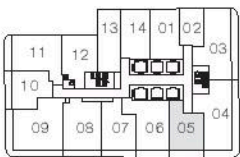
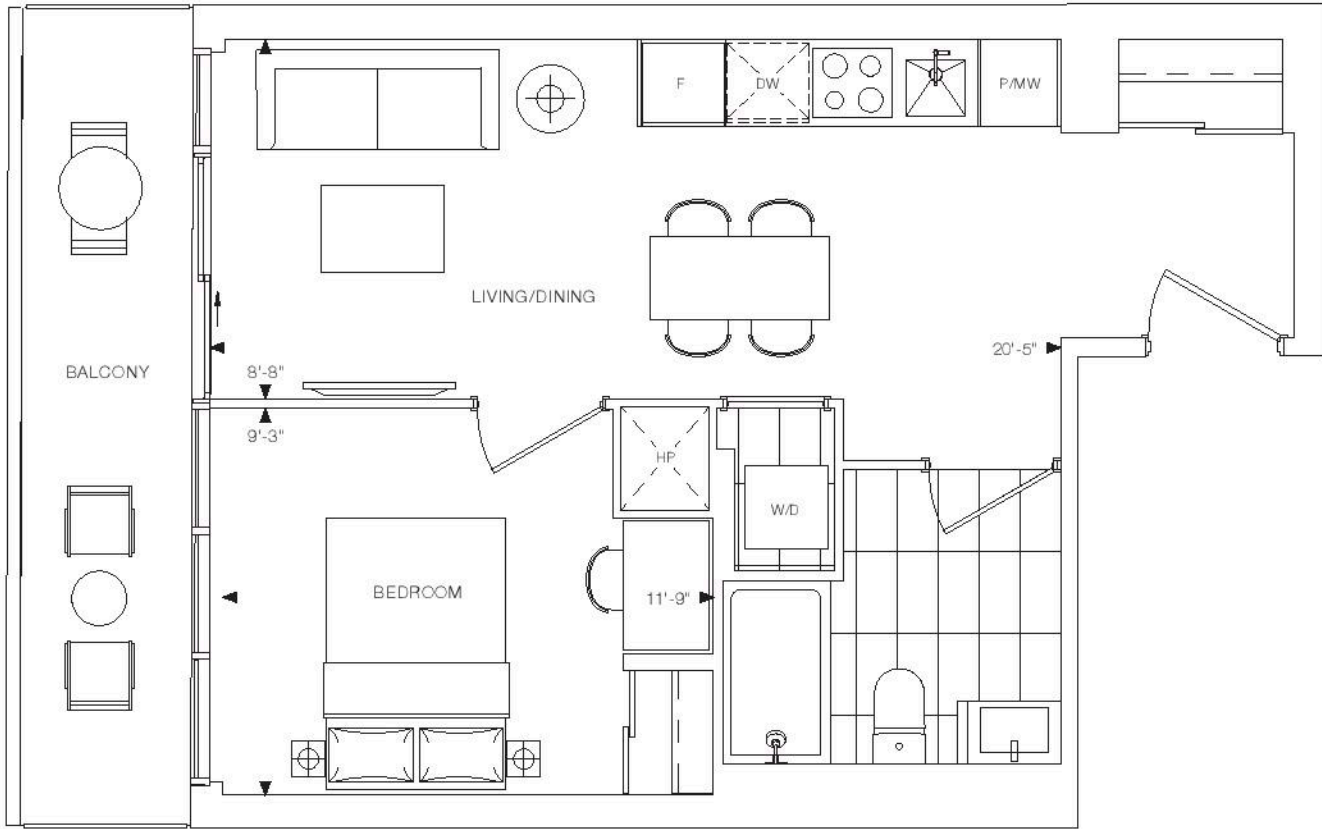
Dimensions, specifications, layouts, and materials are approximate only and are subject to change without notice. Window sizes and locations may vary. Furniture is for illustration purposes only and does not necessarily reflect the electrical plan for the suite. Suites are sold unfurnished. Actual useable floor space within the unit may be different from stated floor areas or dimensions on this plan. For more information on the method used for calculating the floor area of any unit, please refer to Home Construction Regulatory Authority Directive - Floor Area Calculations. Balcony and terrace area is approximate and not included in net suite area. E&O.E.



ELM  
ON  
YONGE

# 1Ca

1 BEDROOM  
INTERIOR: 475 SQ.FT.  
EXTERIOR: 80 SQ.FT.  
TOTAL: 555 SQ.FT.



LEVEL 17-34



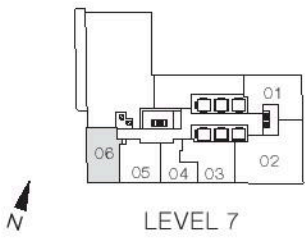
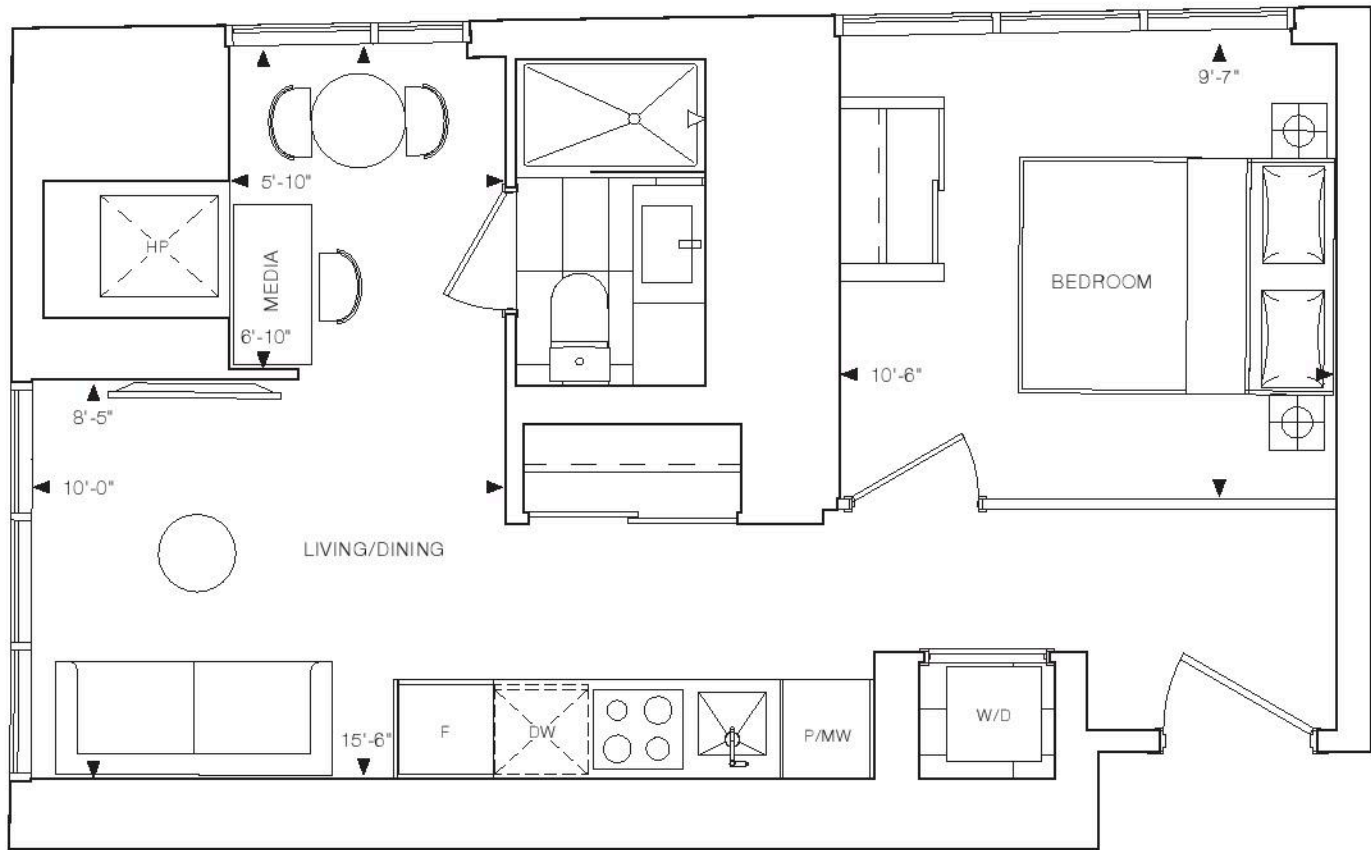
Dimensions, specifications, layouts, and materials are approximate only and are subject to change without notice. Window sizes and locations may vary. Furniture is for illustration purposes only and does not necessarily reflect the electrical plan for the suite. Suites are sold unfurnished. Actual useable floor space within the unit may be different from stated floor areas or dimensions on this plan. For more information on the method used for calculating the floor area of any unit, please refer to Home Construction Regulatory Authority Directive - Floor Area Calculations. Balcony and terrace area is approximate and not included in net suite area. E&O.E.



ELM  
ON  
YONGE

# 1B+M

1 BEDROOM + MEDIA  
INTERIOR: 487 SQ.FT.  
TOTAL: 487 SQ.FT.



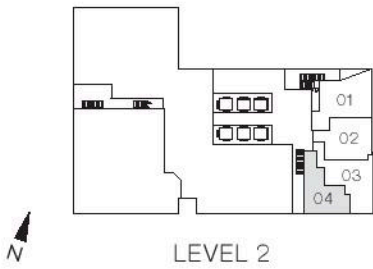
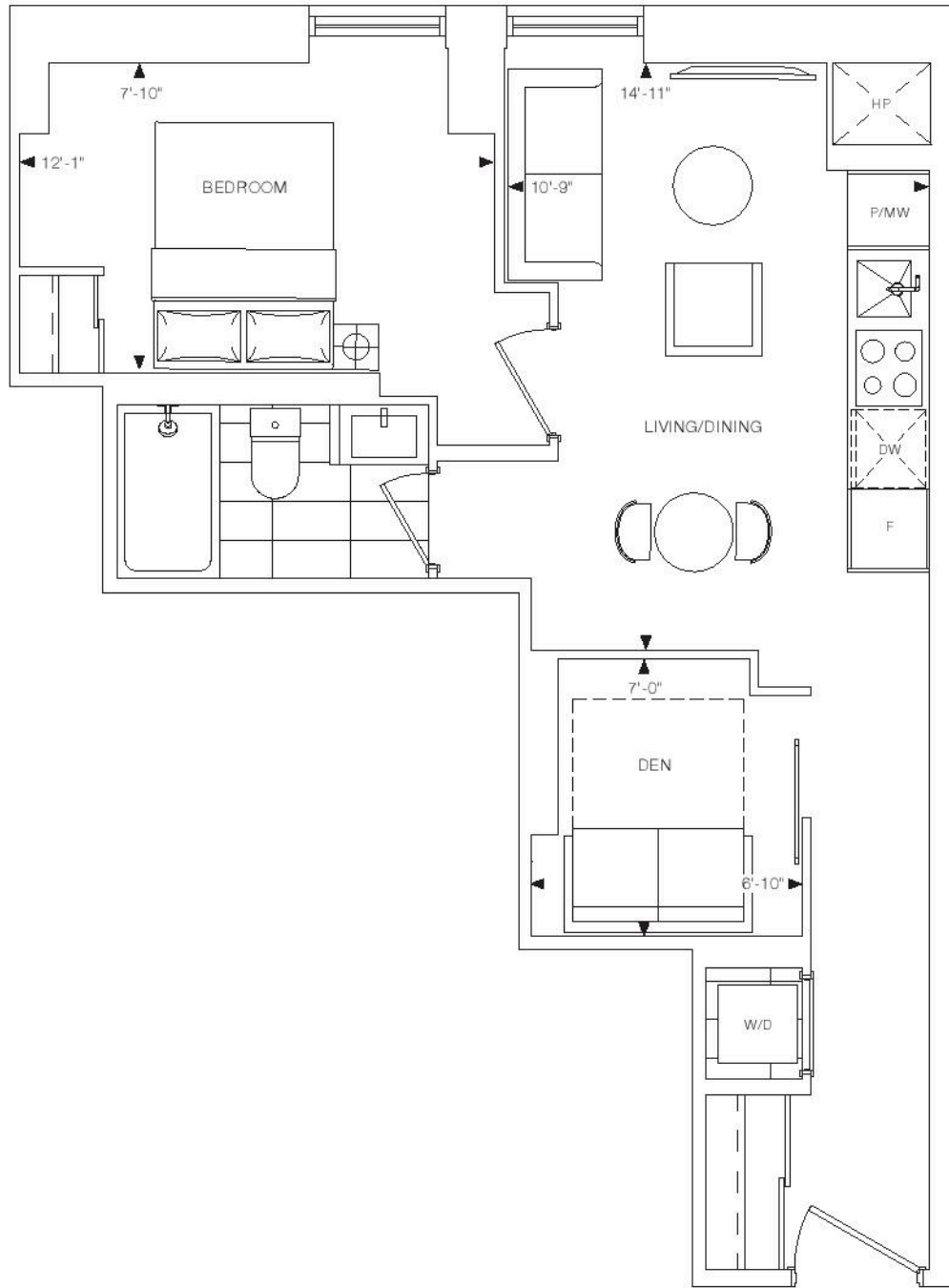
Dimensions, specifications, layouts, and materials are approximate only and are subject to change without notice. Window sizes and locations may vary. Furniture is for illustration purposes only and does not necessarily reflect the electrical plan for the suite. Suites are sold unfurnished. Actual useable floor space within the unit may be different from stated floor areas or dimensions on this plan. For more information on the method used for calculating the floor area of any unit, please refer to Home Construction Regulatory Authority Directive - Floor Area Calculations. Balcony and terrace area is approximate and not included in net suite area. E&O.E.



ELM  
ON  
YONGE

# 1X+D

1 BEDROOM + DEN  
INTERIOR: 505 SQ.FT.  
TOTAL: 505 SQ.FT.

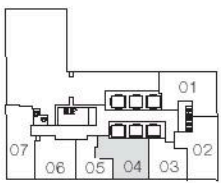
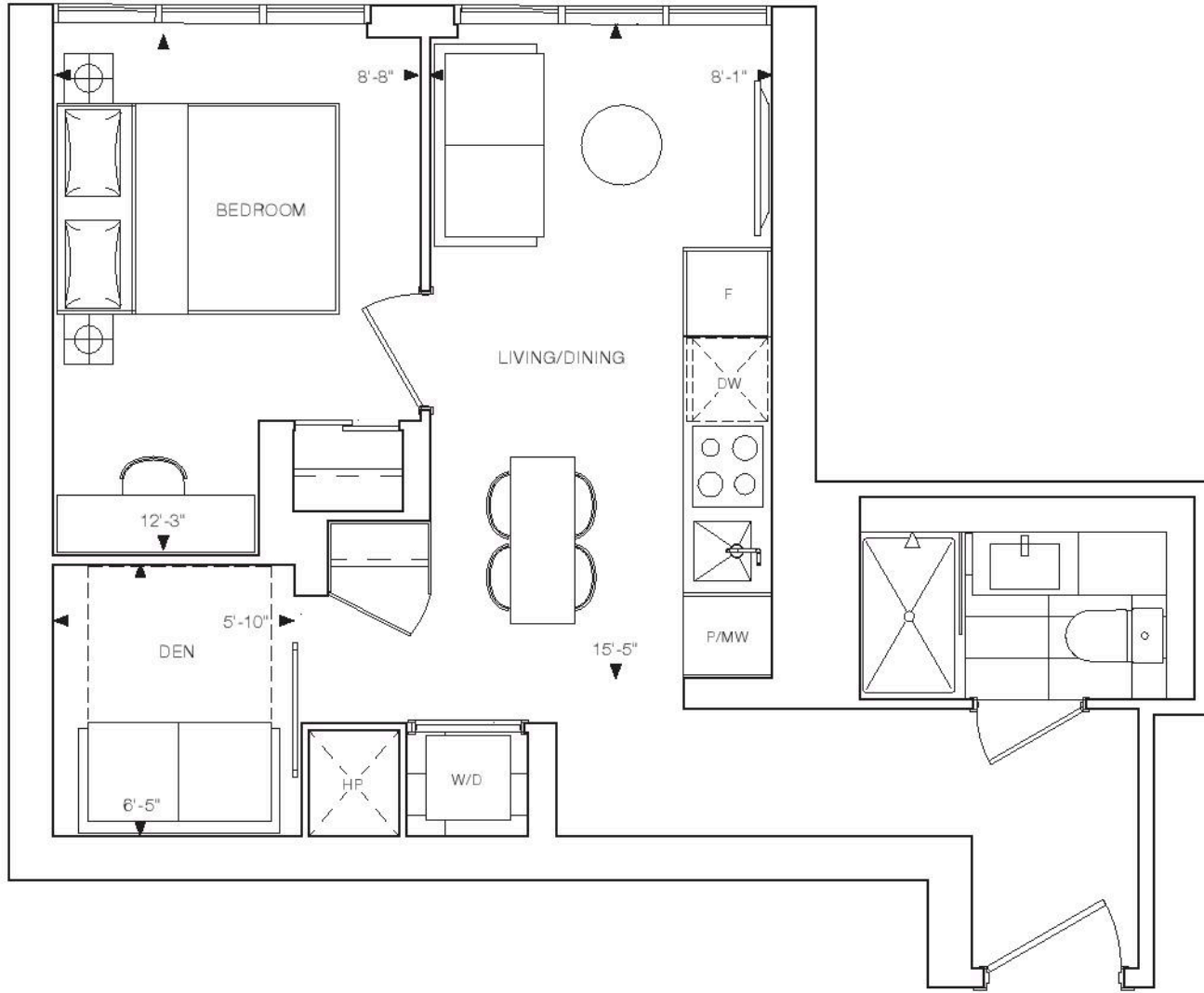




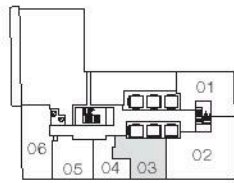
ELM  
ON  
YONGE

# 1U+D

1 BEDROOM + DEN  
INTERIOR: 506 SQ.FT.  
TOTAL: 506 SQ.FT.

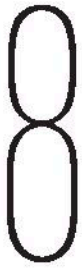


LEVEL 5



LEVEL 6-8

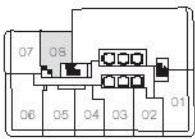
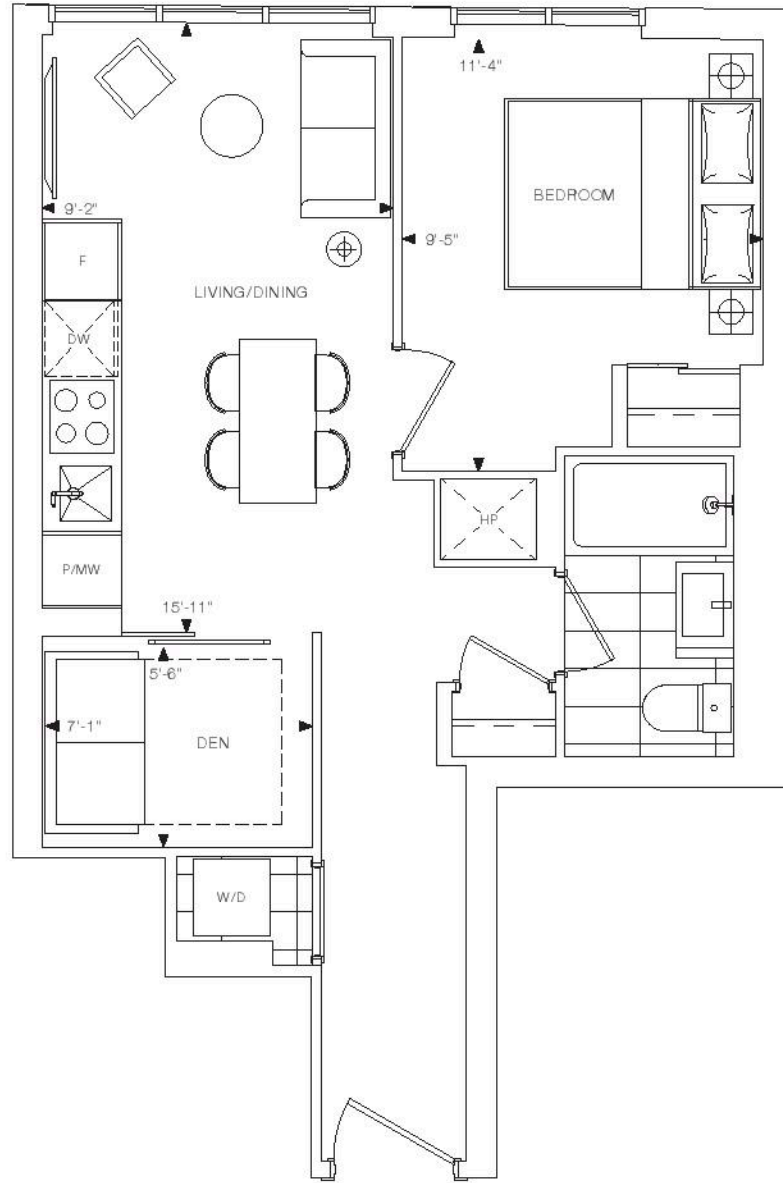




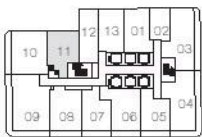
ELM  
ON  
YONGE

# 1D+D

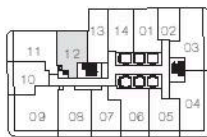
1 BEDROOM + DEN  
INTERIOR: 509 SQ.FT.  
TOTAL: 509 SQ.FT.



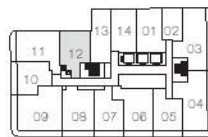
LEVEL 9



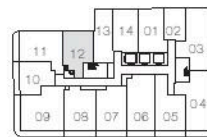
LEVEL 10-12



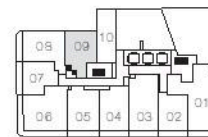
LEVEL 13-39



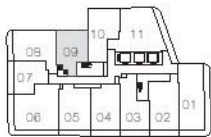
LEVEL 40-44



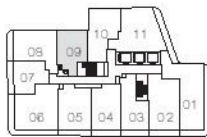
LEVEL 45-55



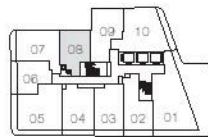
LEVEL 56



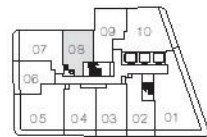
LEVEL 57



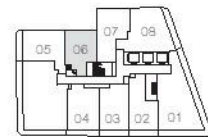
LEVEL 58-59



LEVEL 60



LEVEL 61-68



LEVEL 69



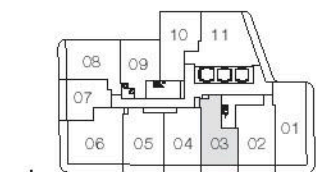
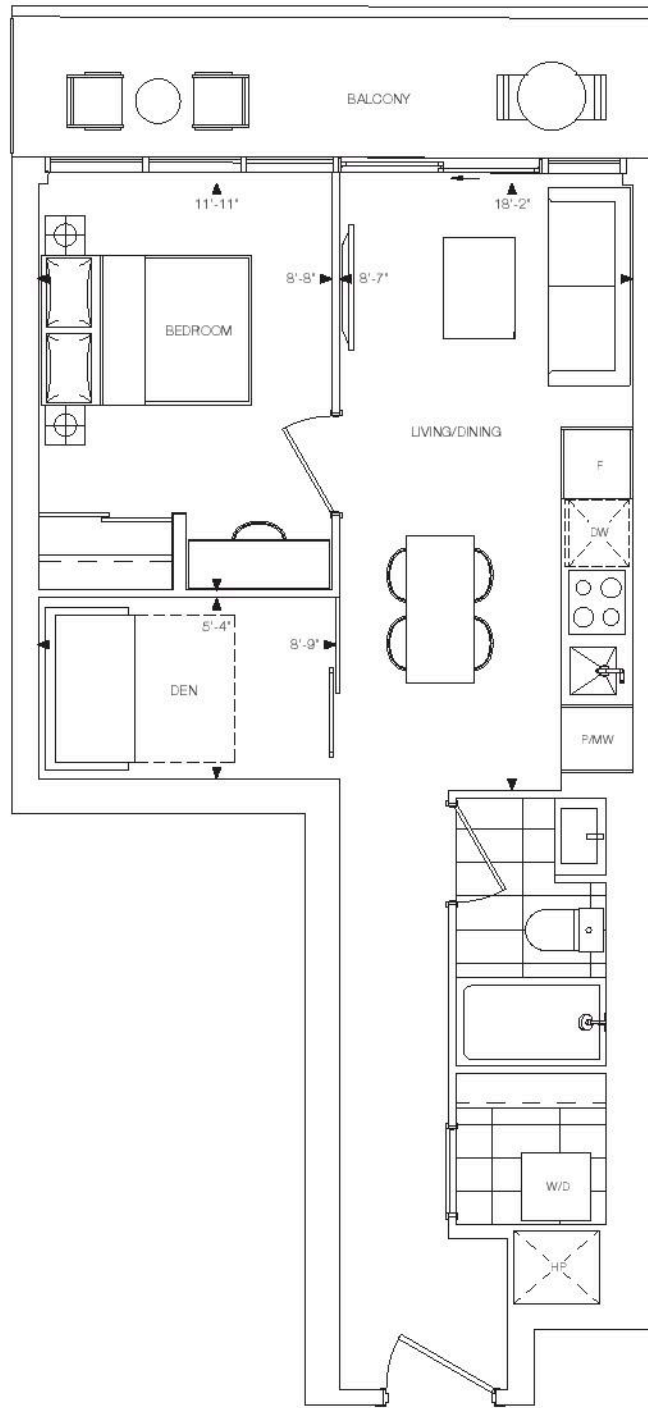




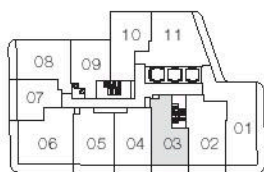
ELM  
ON  
YONGE

# 1G+D

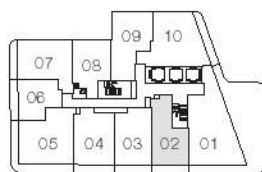
1 BEDROOM + DEN  
INTERIOR: 543 SQ.FT.  
EXTERIOR: 78 SQ.FT.  
TOTAL: 621 SQ.FT.



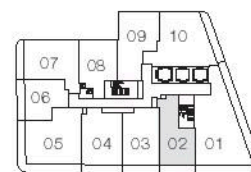
LEVEL 57



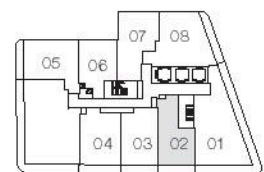
LEVEL 58-59



LEVEL 60



LEVEL 61-68



LEVEL 69



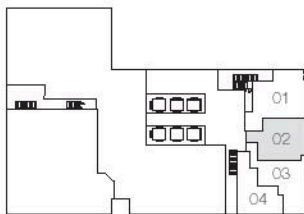
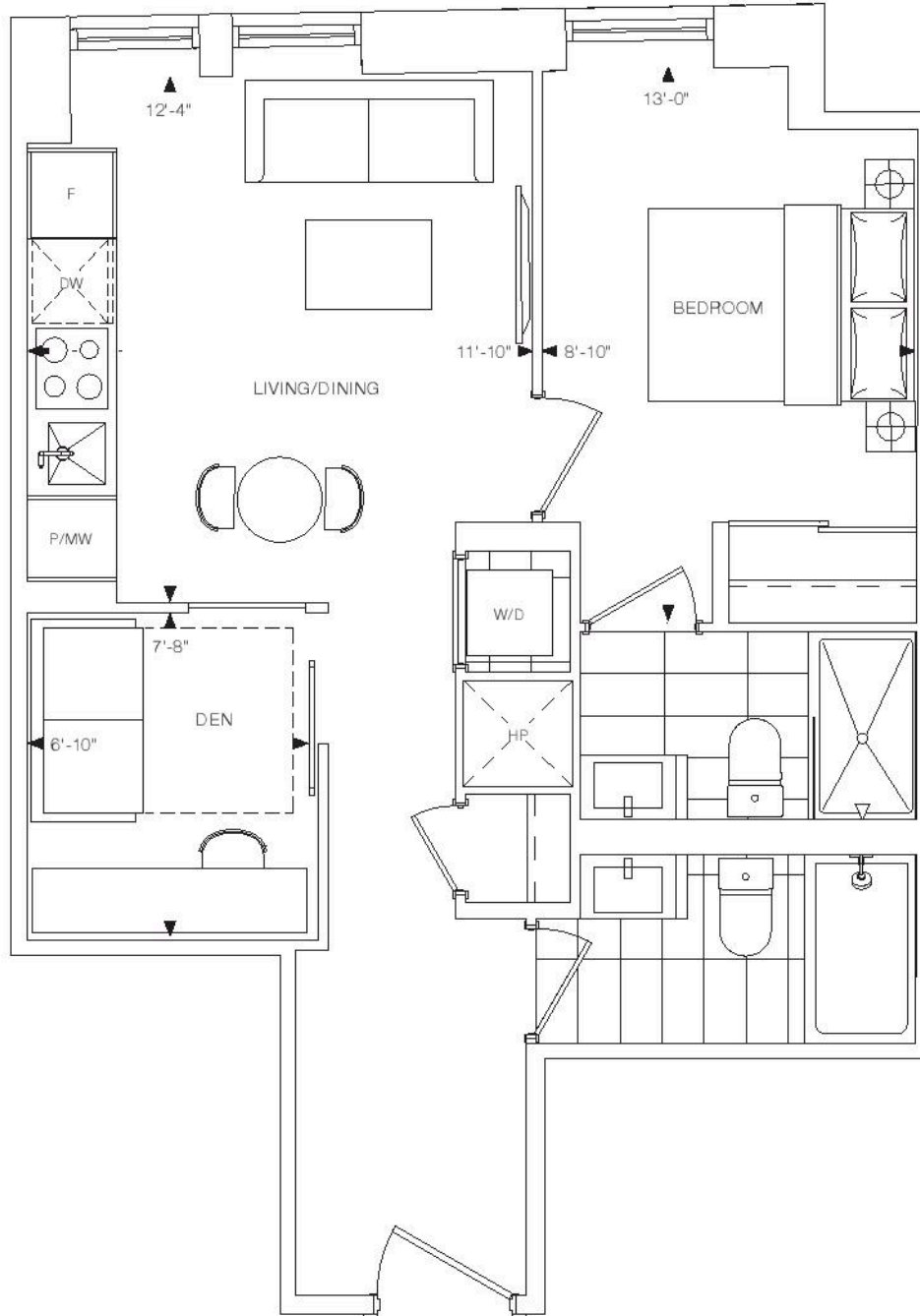




ELM  
ON  
YONGE

# 1F+D

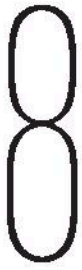
1 BEDROOM + DEN + 2 BATH  
INTERIOR: 547 SQ.FT.  
TOTAL: 547 SQ.FT.



LEVEL 2



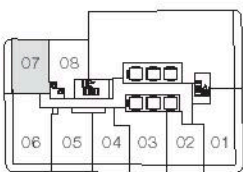
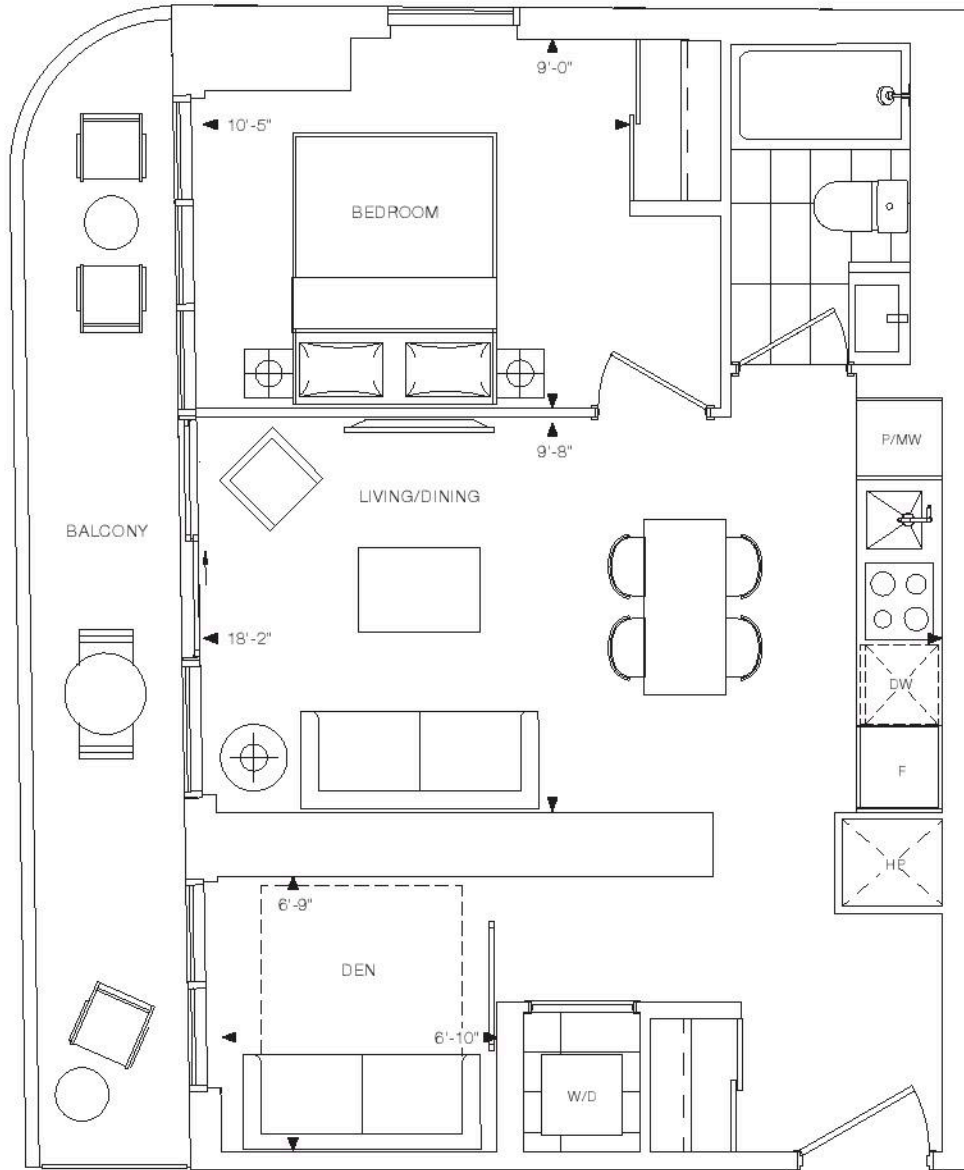
Dimensions, specifications, layouts, and materials are approximate only and are subject to change without notice. Window sizes and locations may vary. Furniture is for illustration purposes only and does not necessarily reflect the electrical plan for the suite. Suites are sold unfurnished. Actual useable floor space within the unit may be different from stated floor areas or dimensions on this plan. For more information on the method used for calculating the floor area of any unit, please refer to Home Construction Regulatory Authority Directive - Floor Area Calculations. Balcony and terrace area is approximate and not included in net suite area. E&O.E.



ELM  
ON  
YONGE

# 1H+D

1 BEDROOM + DEN  
INTERIOR: 558 SQ.FT.  
EXTERIOR: 112 SQ.FT.  
TOTAL: 670 SQ.FT.



LEVEL 9



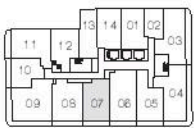
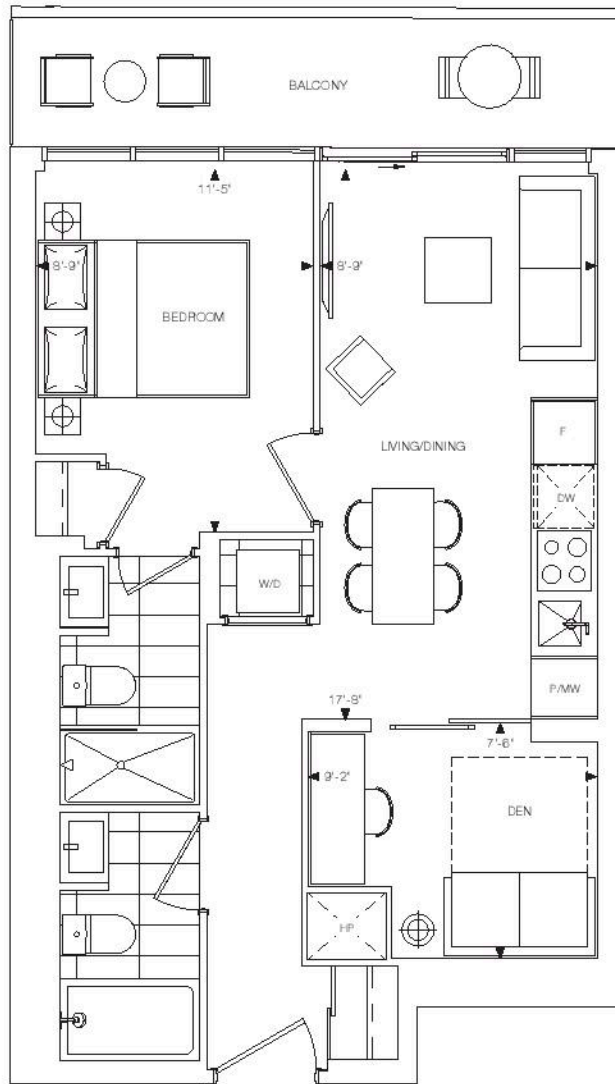
Dimensions, specifications, layouts, and materials are approximate only and are subject to change without notice. Window sizes and locations may vary. Furniture is for illustration purposes only and does not necessarily reflect the electrical plan for the suite. Suites are sold unfurnished. Actual useable floor space within the unit may be different from stated floor areas or dimensions on this plan. For more information on the method used for calculating the floor area of any unit, please refer to Home Construction Regulatory Authority Directive - Floor Area Calculations. Balcony and terrace area is approximate and not included in net suite area. E&O.E.



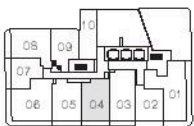
ELM  
ON  
YONGE

# 1J+D

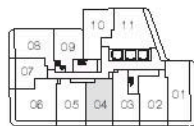
1 BEDROOM + DEN + 2 BATH  
INTERIOR: 559 SQ.FT.  
EXTERIOR: 79 SQ.FT.  
TOTAL: 638 SQ.FT.



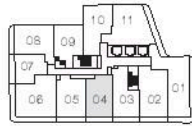
LEVEL 45-55



LEVEL 56



LEVEL 57



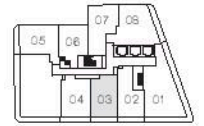
LEVEL 58-59



LEVEL 60



LEVEL 61-68



LEVEL 69



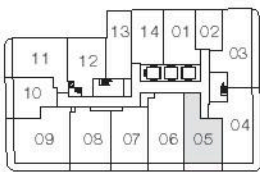
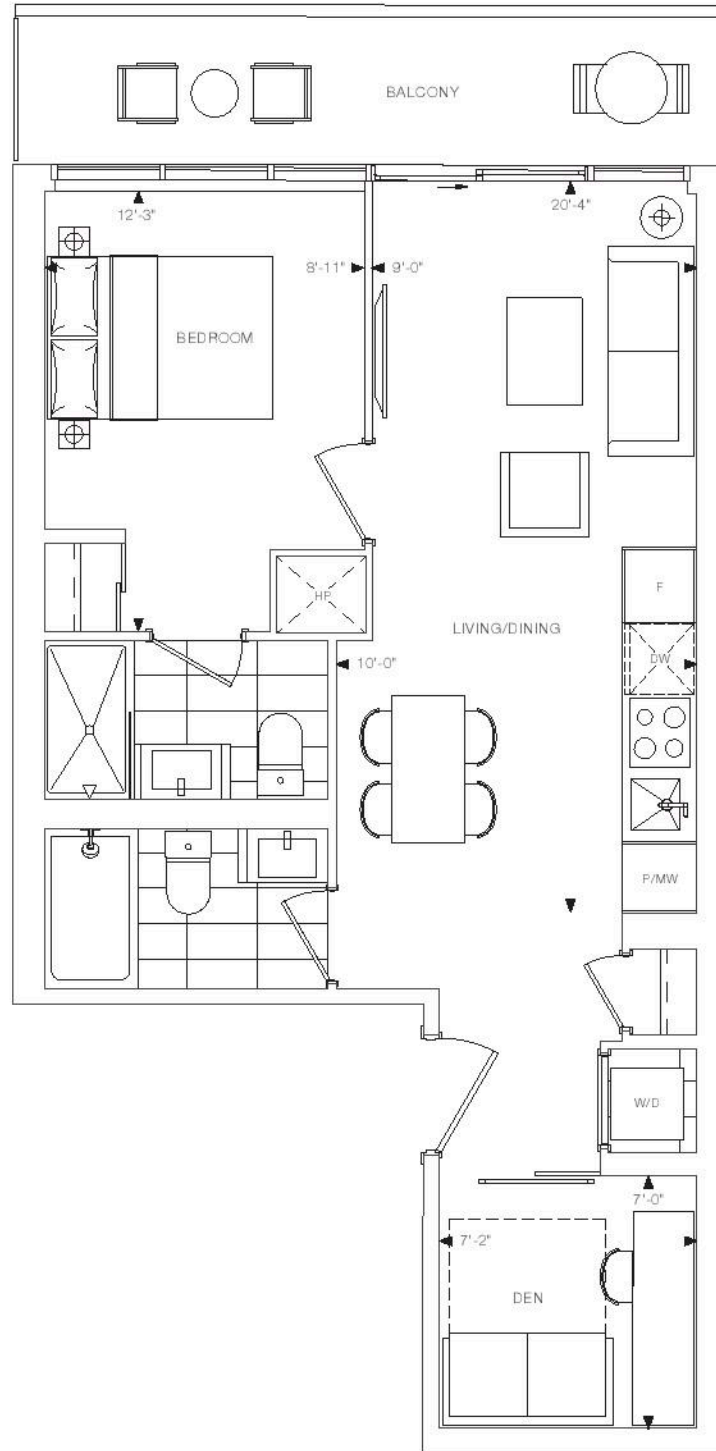
Dimensions, specifications, layouts, and materials are approximate only and are subject to change without notice. Window sizes and locations may vary. Furniture is for illustration purposes only and does not necessarily reflect the electrical plan for the suite. Suites are sold unfurnished. Actual useable floor space within the unit may be different from stated floor areas or dimensions on this plan. For more information on the method used for calculating the floor area of any unit, please refer to Home Construction Regulatory Authority Directive - Floor Area Calculations. Balcony and terrace area is approximate and not included in net suite area. E&OE.



ELM  
ON  
YONGE

# 1L+D

1 BEDROOM + DEN + 2 BATH  
INTERIOR: 571 SQ.FT.  
EXTERIOR: 80 SQ.FT.  
TOTAL: 651 SQ.FT.



LEVEL 45-55



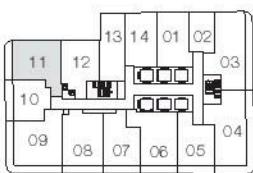
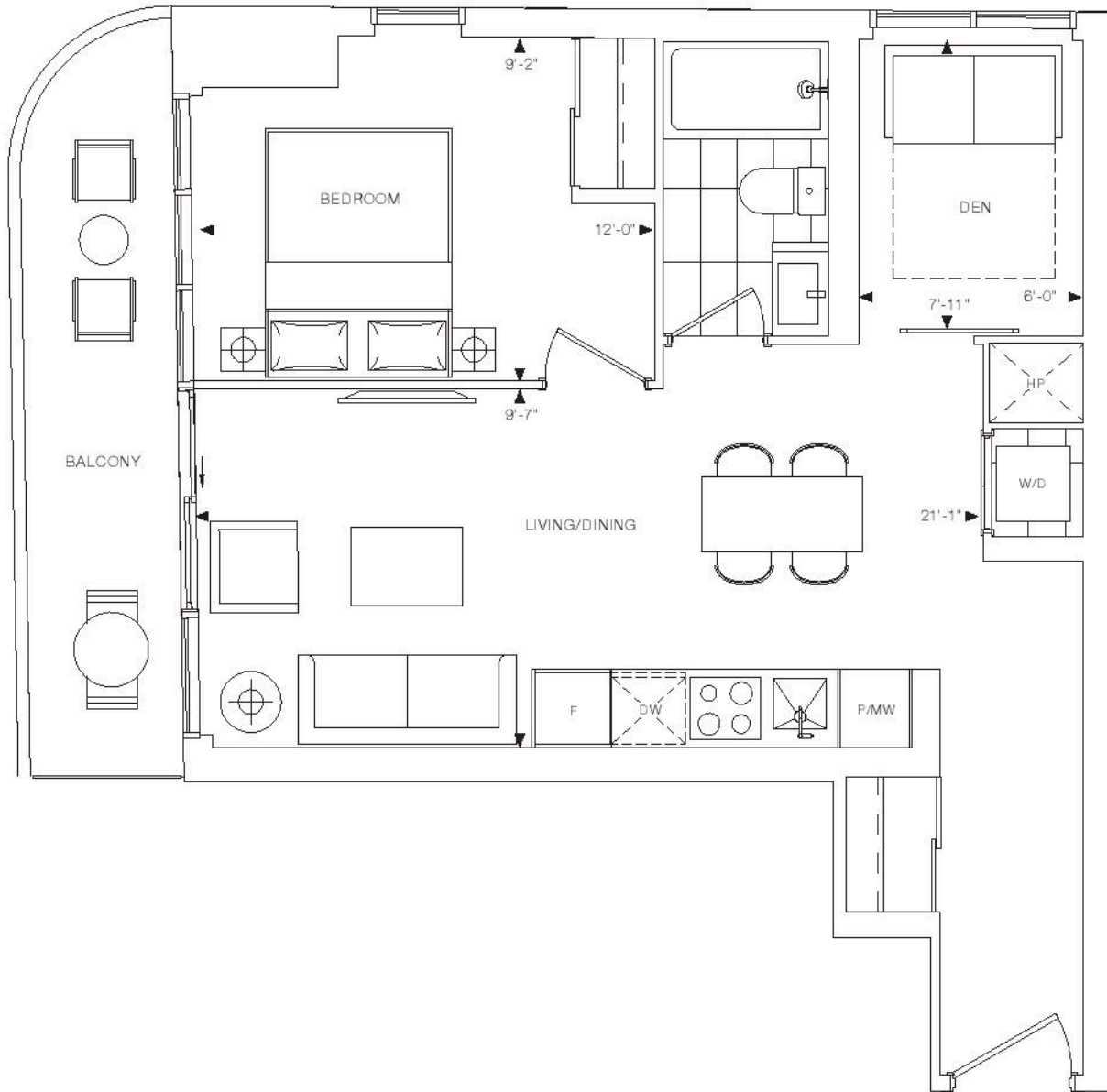
Dimensions, specifications, layouts, and materials are approximate only and are subject to change without notice. Window sizes and locations may vary. Furniture is for illustration purposes only and does not necessarily reflect the electrical plan for the suite. Suites are sold unfurnished. Actual useable floor space within the unit may be different from stated floor areas or dimensions on this plan. For more information on the method used for calculating the floor area of any unit, please refer to Home Construction Regulatory Authority Directive - Floor Area Calculations. Balcony and terrace area is approximate and not included in net suite area. E&O.E.



ELM  
ON  
YONGE

# 1N+D

1 BEDROOM + DEN  
INTERIOR: 571 SQ.FT.  
EXTERIOR: 81 SQ.FT.  
TOTAL: 652 SQ.FT.



LEVEL 13



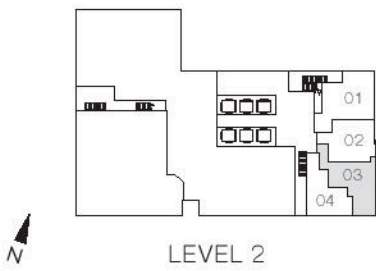
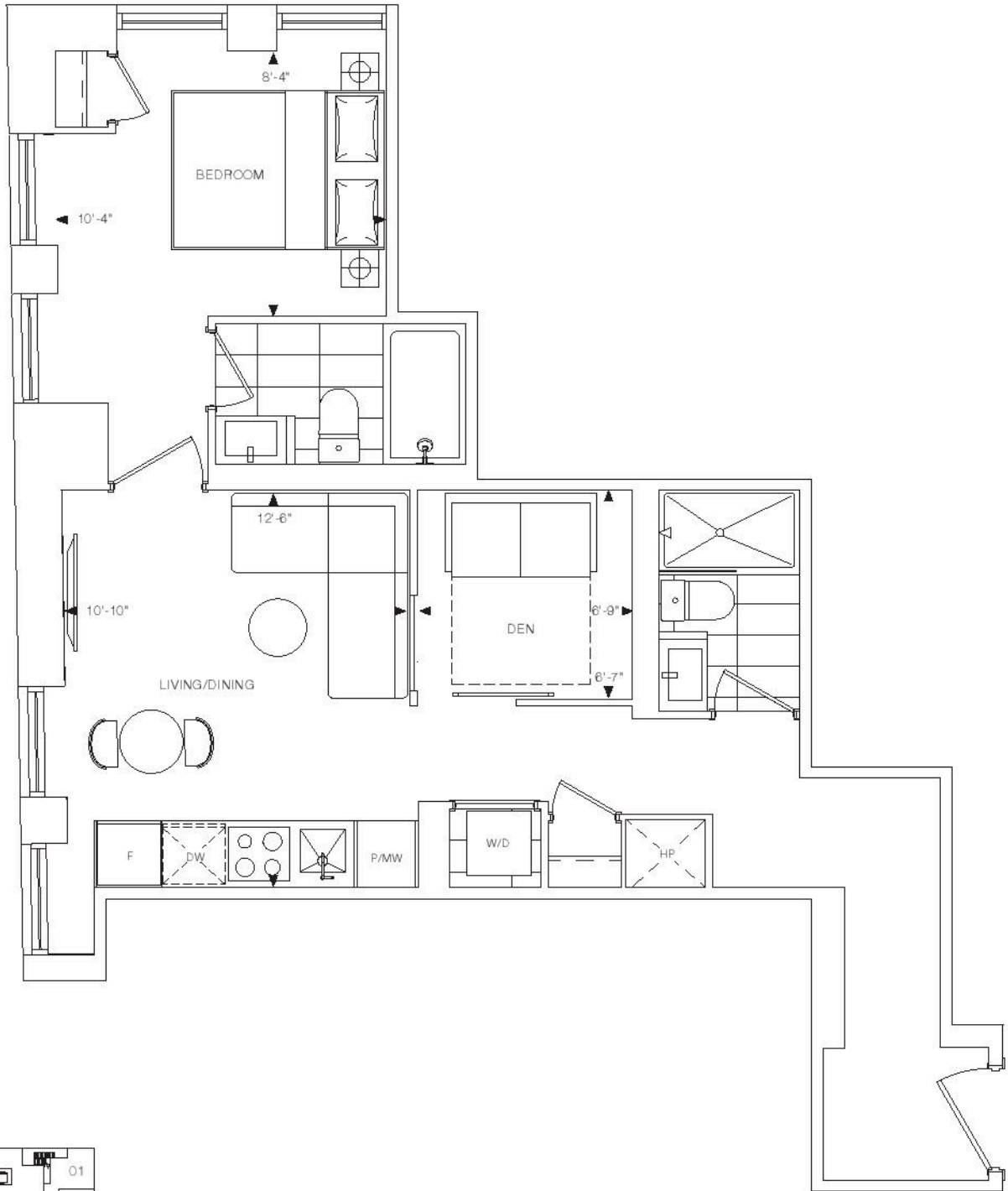
Dimensions, specifications, layouts, and materials are approximate only and are subject to change without notice. Window sizes and locations may vary. Furniture is for illustration purposes only and does not necessarily reflect the electrical plan for the suite. Suites are sold unfurnished. Actual useable floor space within the unit may be different from stated floor areas or dimensions on this plan. For more information on the method used for calculating the floor area of any unit, please refer to Home Construction Regulatory Authority Directive - Floor Area Calculations. Balcony and terrace area is approximate and not included in net suite area. E&O.E.

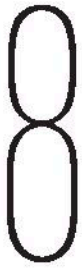


ELM  
ON  
YONGE

# 1P+D

1 BEDROOM + DEN + 2 BATH  
INTERIOR: 596 SQ.FT.  
TOTAL: 596 SQ.FT.

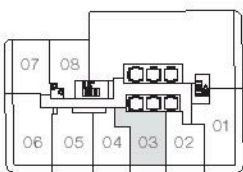
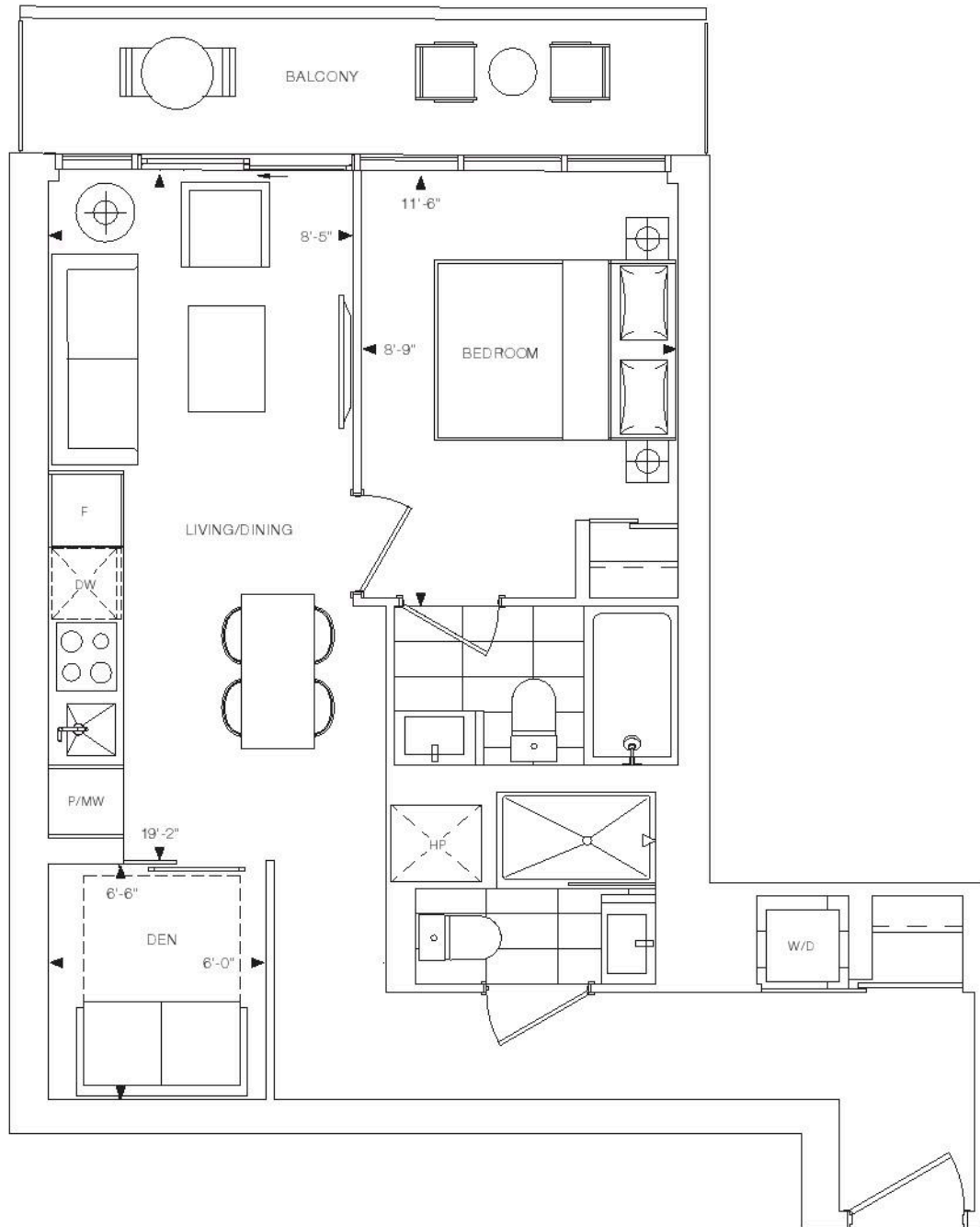




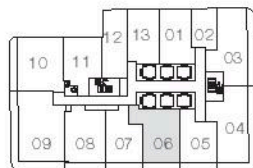
ELM  
ON  
YONGE

# 1Q+D

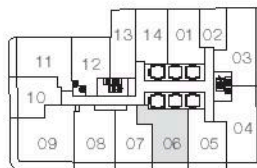
1 BEDROOM + DEN + 2 BATH  
INTERIOR: 603 SQ.FT.  
EXTERIOR: 78 SQ.FT.  
TOTAL: 681 SQ.FT.



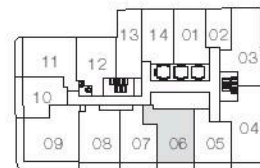
LEVEL 9



LEVEL 10-12



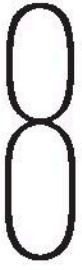
LEVEL 13-39



LEVEL 40-44



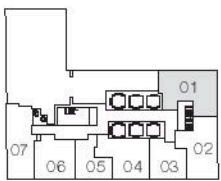
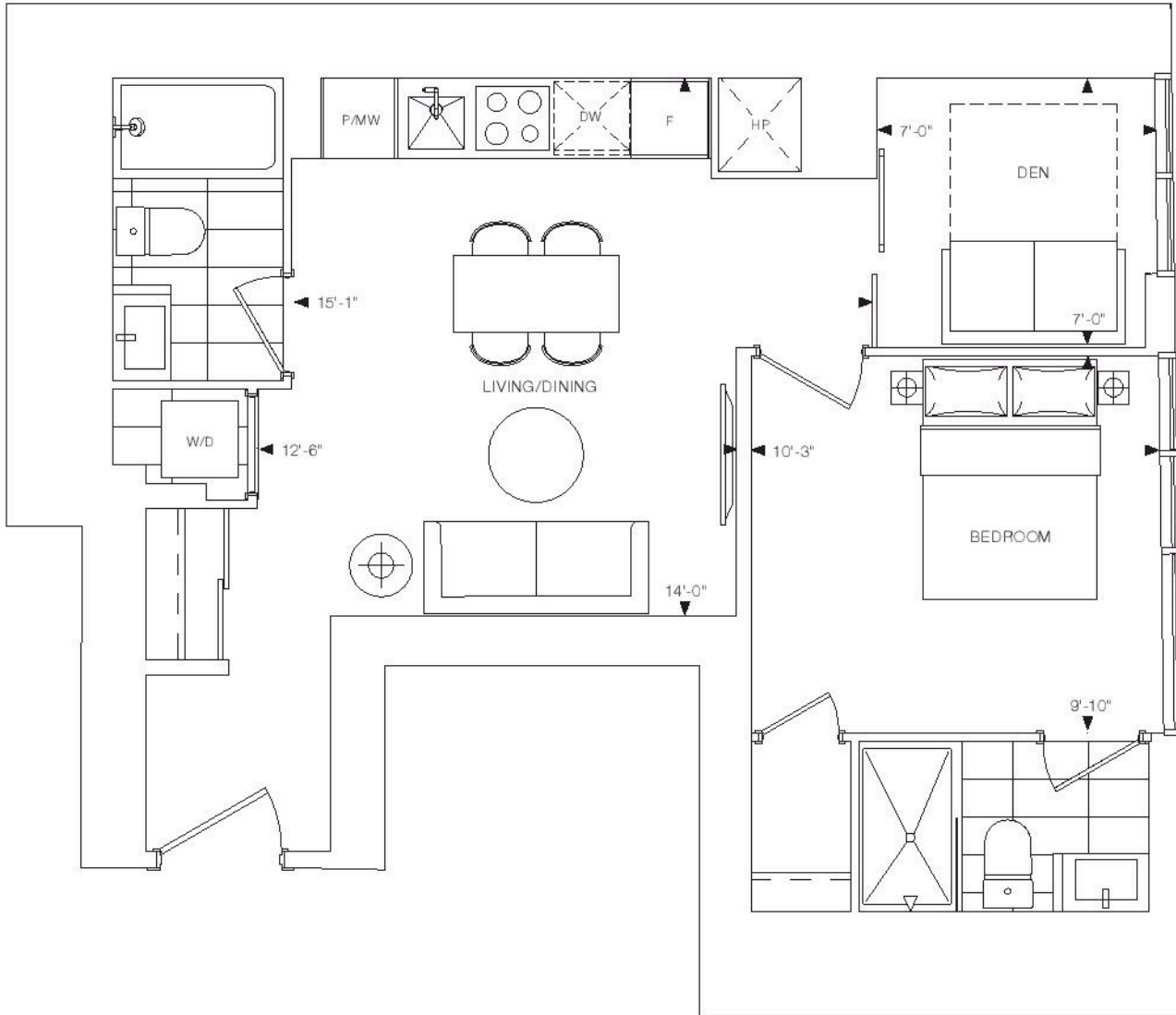




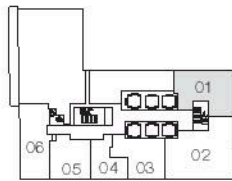
ELM  
ON  
YONGE

# 1R+D

1 BEDROOM + DEN + 2 BATH  
INTERIOR: 683 SQ.FT.  
TOTAL: 683 SQ.FT.



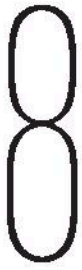
LEVEL 5



LEVEL 6-8



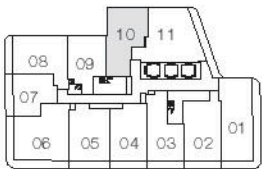
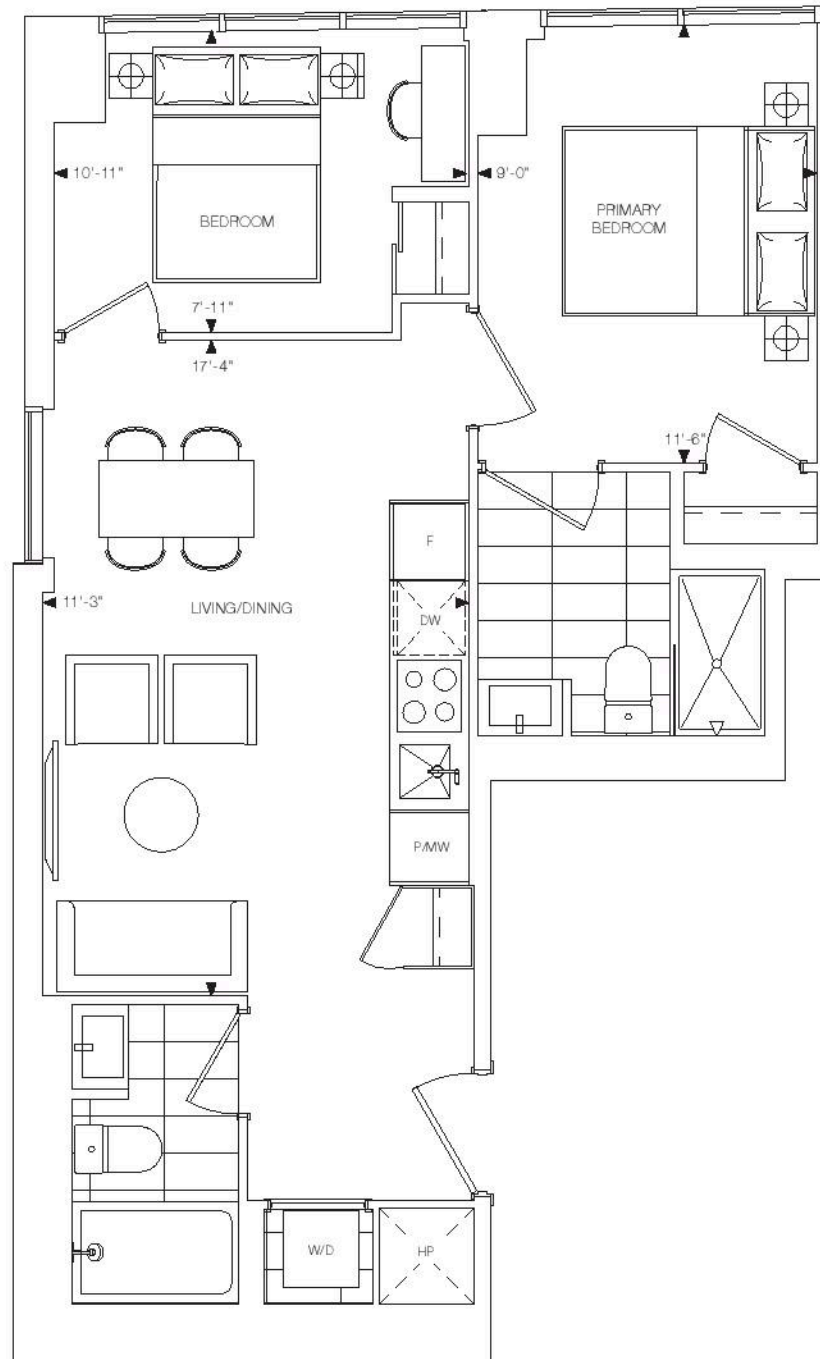
Dimensions, specifications, layouts, and materials are approximate only and are subject to change without notice. Window sizes and locations may vary. Furniture is for illustration purposes only and does not necessarily reflect the electrical plan for the suite. Suites are sold unfurnished. Actual useable floor space within the unit may be different from stated floor areas or dimensions on this plan. For more information on the method used for calculating the floor area of any unit, please refer to Home Construction Regulatory Authority Directive - Floor Area Calculations. Balcony and terrace area is approximate and not included in net suite area. E&O.E.



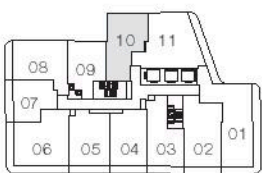
ELM  
ON  
YONGE

# 2H

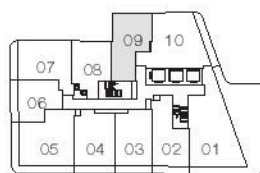
2 BEDROOM + 2 BATH  
INTERIOR: 623 SQ.FT.  
TOTAL: 623 SQ.FT.



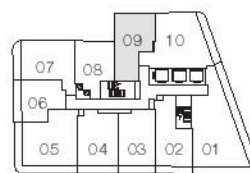
LEVEL 57



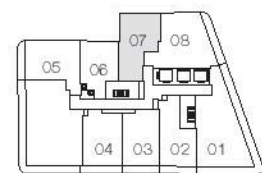
LEVEL 58-59



LEVEL 60



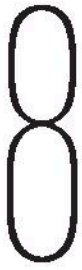
LEVEL 61-68



LEVEL 69



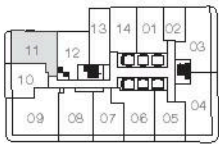
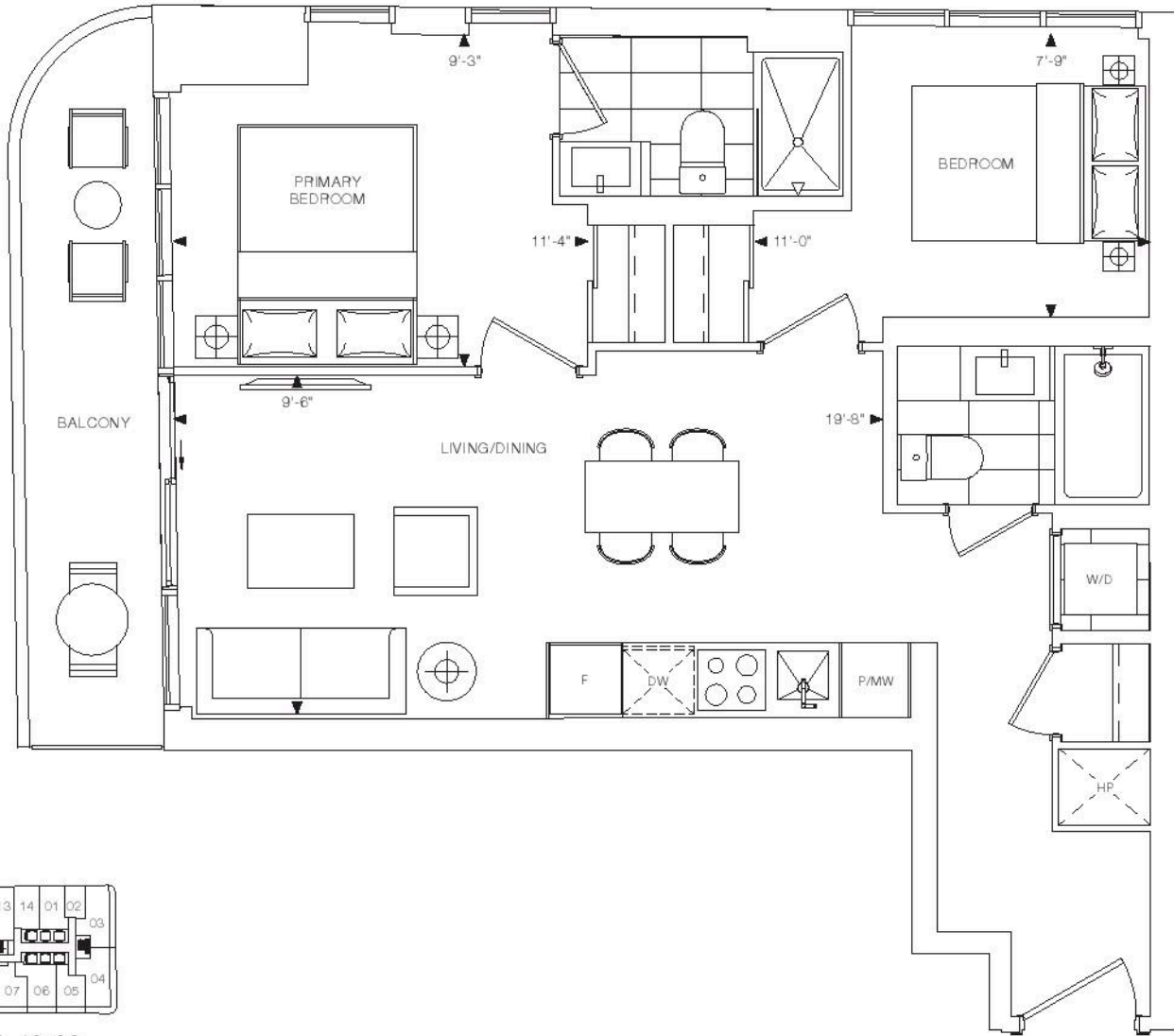
Dimensions, specifications, layouts, and materials are approximate only and are subject to change without notice. Window sizes and locations may vary. Furniture is for illustration purposes only and does not necessarily reflect the electrical plan for the suite. Suites are sold unfurnished. Actual useable floor space within the unit may be different from stated floor areas or dimensions on this plan. For more information on the method used for calculating the floor area of any unit, please refer to Home Construction Regulatory Authority Directive - Floor Area Calculations. Balcony and terrace area is approximate and not included in net suite area. E&O.E.



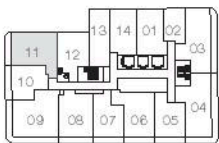
ELM ON YONGE

2D

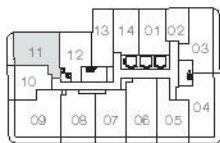
2 BEDROOM + 2 BATH  
INTERIOR: 639 SQ.FT.  
EXTERIOR: 81 SQ.FT.  
TOTAL: 720 SQ.FT.



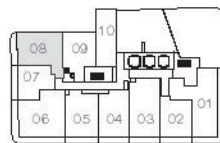
LEVEL 16-39



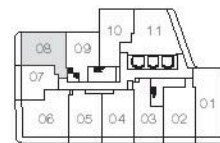
LEVEL 40-44



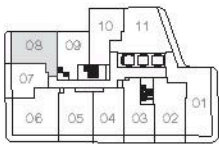
LEVEL 45-55



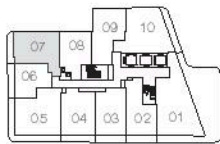
LEVEL 56



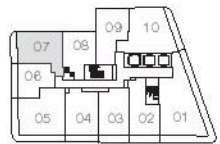
LEVEL 57



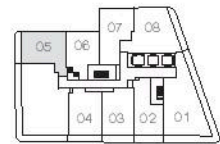
LEVEL 58-59



LEVEL 60



LEVEL 61-68



LEVEL 69



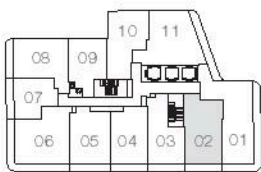
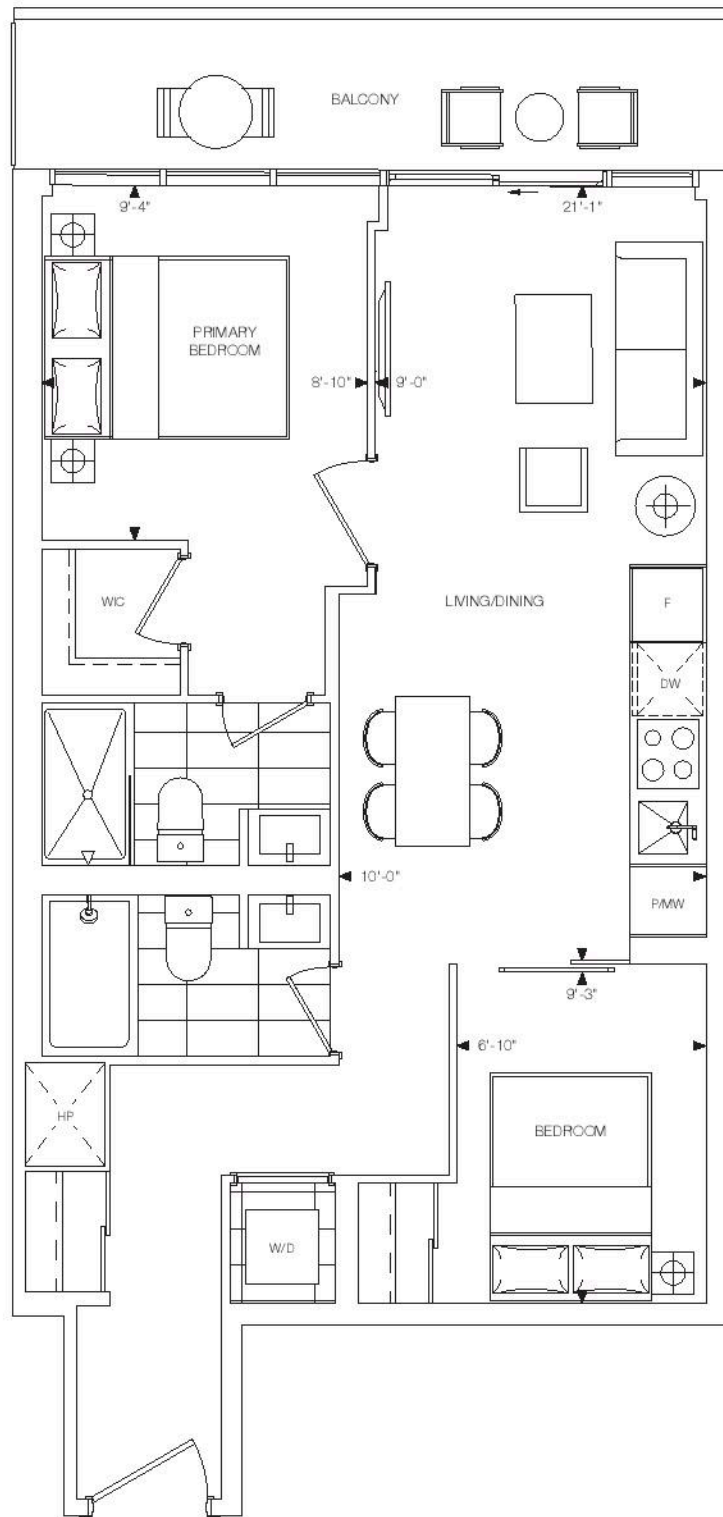
Dimensions, specifications, layouts, and materials are approximate only and are subject to change without notice. Window sizes and locations may vary. Furniture is for illustration purposes only and does not necessarily reflect the electrical plan for the suite. Suites are sold unfurnished. Actual useable floor space within the unit may be different from stated floor areas or dimensions on this plan. For more information on the method used for calculating the floor area of any unit, please refer to Home Construction Regulatory Authority Directive - Floor Area Calculations. Balcony and terrace area is approximate and not included in net suite area. E&O.E.



ELM  
ON  
YONGE

# 2G

2 BEDROOM + 2 BATH  
INTERIOR: 654 SQ.FT.  
EXTERIOR: 81 SQ.FT.  
TOTAL: 735 SQ.FT.



LEVEL 57



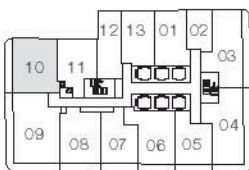
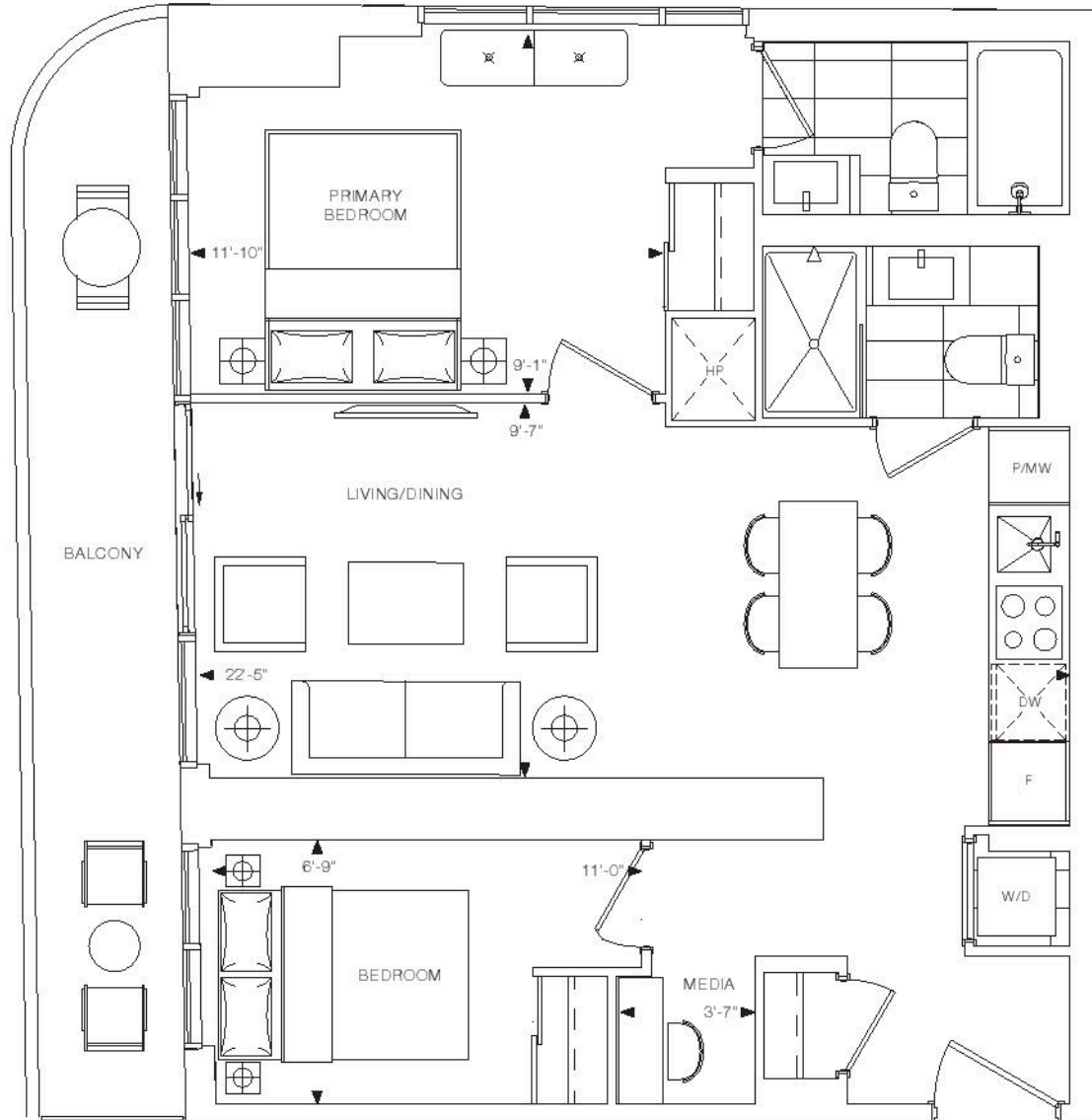
Dimensions, specifications, layouts, and materials are approximate only and are subject to change without notice. Window sizes and locations may vary. Furniture is for illustration purposes only and does not necessarily reflect the electrical plan for the suite. Suites are sold unfurnished. Actual useable floor space within the unit may be different from stated floor areas or dimensions on this plan. For more information on the method used for calculating the floor area of any unit, please refer to Home Construction Regulatory Authority Directive - Floor Area Calculations. Balcony and terrace area is approximate and not included in net suite area. E&O.E.



ELM  
ON  
YONGE

# 2N+M

2 BEDROOM + MEDIA + 2 BATH  
INTERIOR: 679 SQ.FT.  
EXTERIOR: 113 SQ.FT.  
TOTAL: 792 SQ.FT.



LEVEL 12



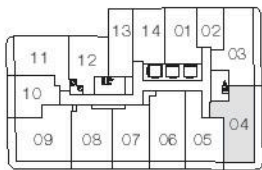
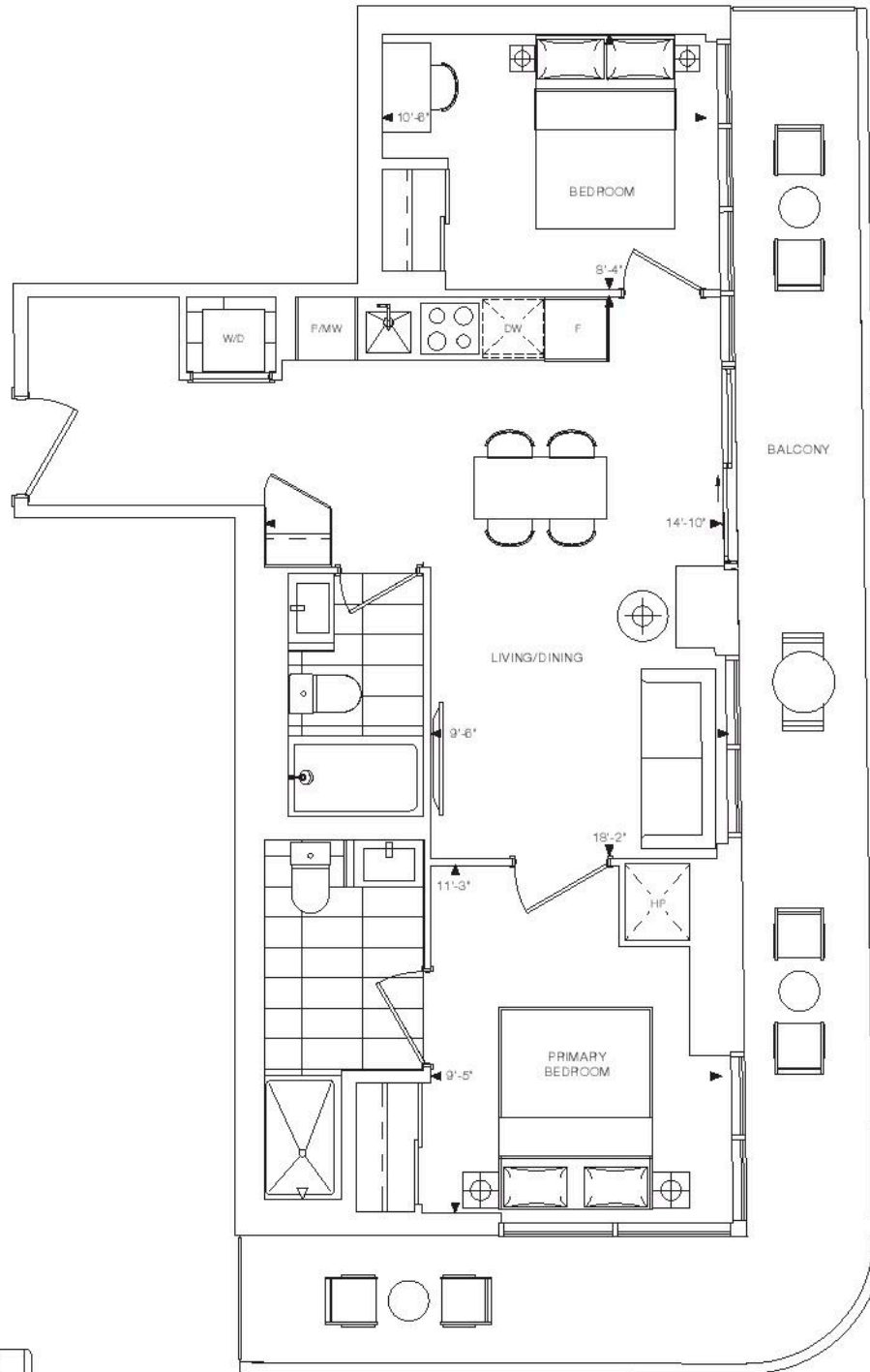
Dimensions, specifications, layouts, and materials are approximate only and are subject to change without notice. Window sizes and locations may vary. Furniture is for illustration purposes only and does not necessarily reflect the electrical plan for the suite. Suites are sold unfurnished. Actual useable floor space within the unit may be different from stated floor areas or dimensions on this plan. For more information on the method used for calculating the floor area of any unit, please refer to Home Construction Regulatory Authority Directive - Floor Area Calculations. Balcony and terrace area is approximate and not included in net suite area. E&O.E.



ELM  
ON  
YONGE

# 2J

2 BEDROOM + 2 BATH  
INTERIOR: 681 SQ.FT.  
EXTERIOR: 241 SQ.FT.  
TOTAL: 922 SQ.FT.



LEVEL 45-55



Dimensions, specifications, layouts, and materials are approximate only and are subject to change without notice. Window sizes and locations may vary. Furniture is for illustration purposes only and does not necessarily reflect the electrical plan for the suite. Suites are sold unfurnished. Actual useable floor space within the unit may be different from stated floor areas or dimensions on this plan. For more information on the method used for calculating the floor area of any unit, please refer to Home Construction Regulatory Authority Directive - Floor Area Calculations. Balcony and terrace area is approximate and not included in net suite area. E&O.E.

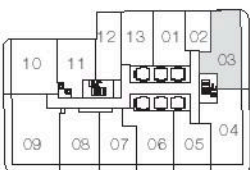
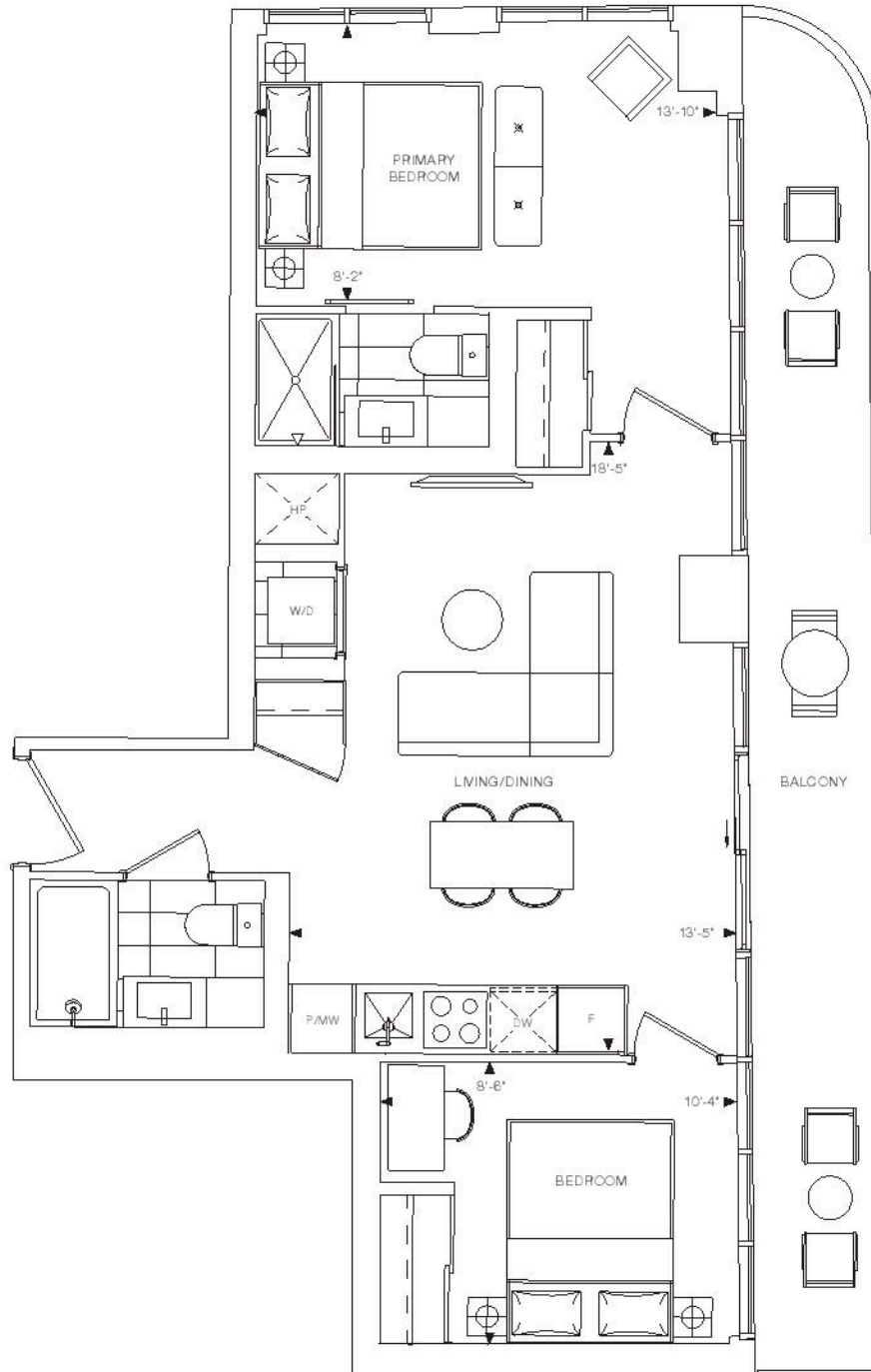




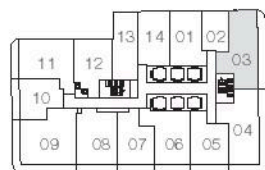
ELM  
ON  
YONGE

# 2L

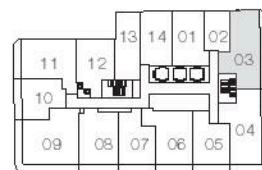
2 BEDROOM + 2 BATH  
INTERIOR: 683 SQ.FT.  
EXTERIOR: 165 SQ.FT.  
TOTAL: 848 SQ.FT.



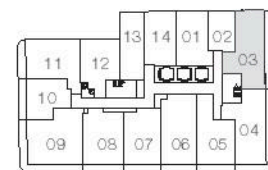
LEVEL 10-12



LEVEL 13-39



LEVEL 40-44



LEVEL 45-55



Dimensions, specifications, layouts, and materials are approximate only and are subject to change without notice. Window sizes and locations may vary. Furniture is for illustration purposes only and does not necessarily reflect the electrical plan for the suite. Suites are sold unfurnished. Actual useable floor space within the unit may be different from stated floor areas or dimensions on this plan. For more information on the method used for calculating the floor area of any unit, please refer to Home Construction Regulatory Authority Directive - Floor Area Calculations. Balcony and terrace area is approximate and not included in net suite area. E&O.E.

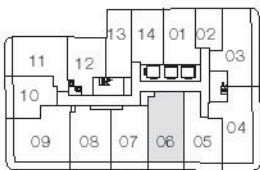
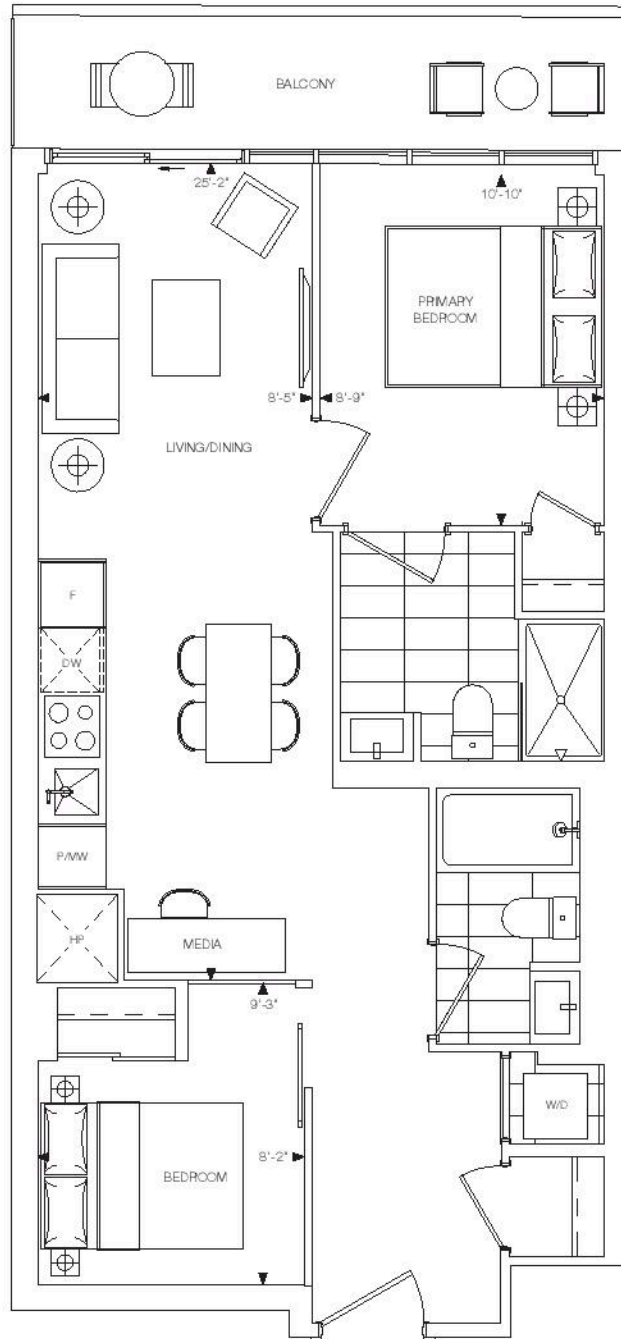




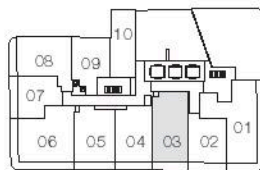
ELM  
ON  
YONGE

# 20+M

2 BEDROOM + MEDIA + 2 BATH  
INTERIOR: 689 SQ.FT.  
EXTERIOR: 77 SQ.FT.  
TOTAL: 766 SQ.FT.



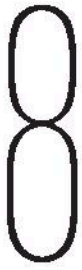
LEVEL 45-55



LEVEL 56



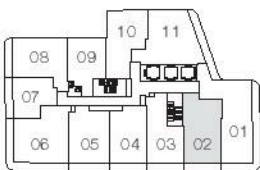
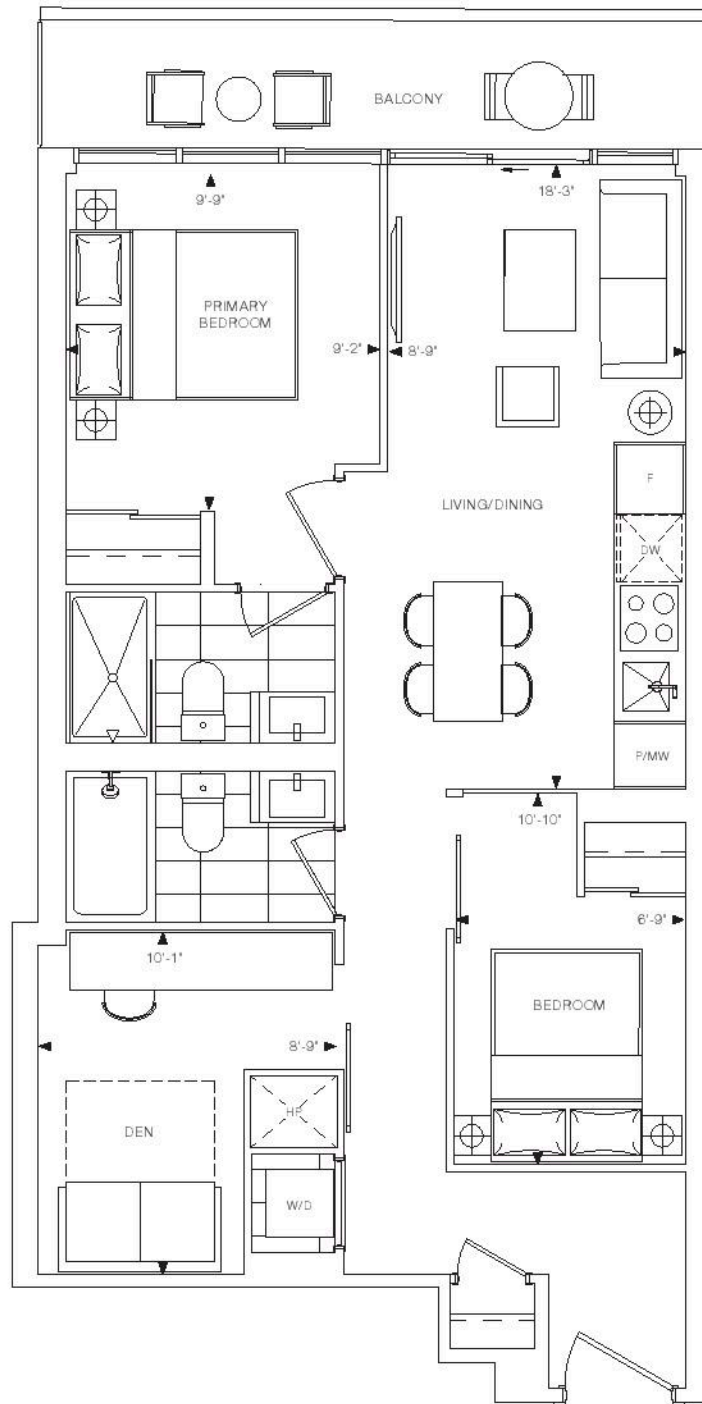
Dimensions, specifications, layouts, and materials are approximate only and are subject to change without notice. Window sizes and locations may vary. Furniture is for illustration purposes only and does not necessarily reflect the electrical plan for the suite. Suites are sold unfurnished. Actual useable floor space within the unit may be different from stated floor areas or dimensions on this plan. For more information on the method used for calculating the floor area of any unit, please refer to Home Construction Regulatory Authority Directive - Floor Area Calculations. Balcony and terrace area is approximate and not included in net suite area. E&O.E.



ELM  
ON  
YONGE

# 2A+D

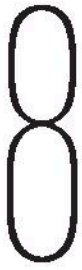
2 BEDROOM + DEN + 2 BATH  
INTERIOR: 700 SQ.FT.  
EXTERIOR: 81 SQ.FT.  
TOTAL: 781 SQ.FT.



LEVEL 58-59



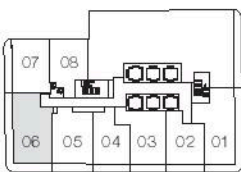
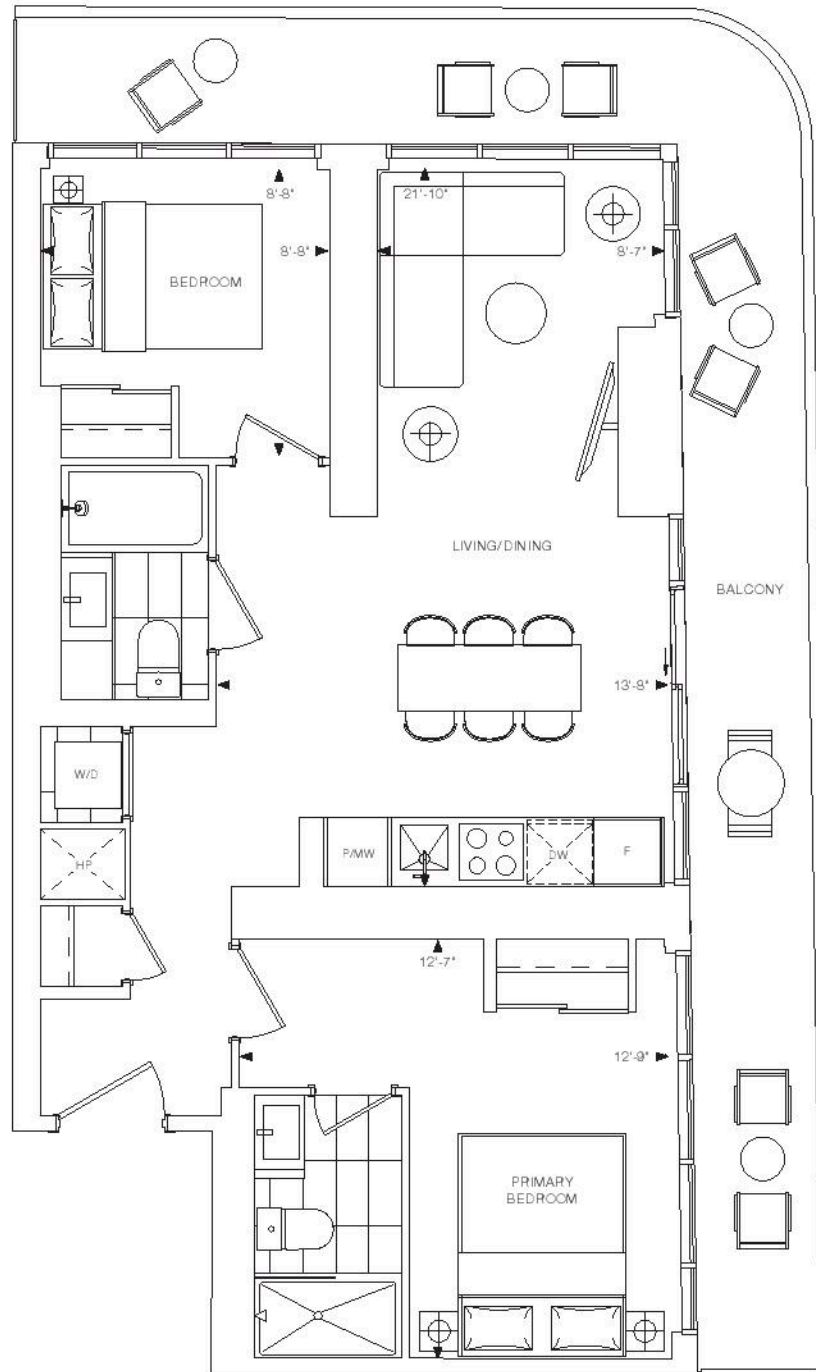
Dimensions, specifications, layouts, and materials are approximate only and are subject to change without notice. Window sizes and locations may vary. Furniture is for illustration purposes only and does not necessarily reflect the electrical plan for the suite. Suites are sold unfurnished. Actual useable floor space within the unit may be different from stated floor areas or dimensions on this plan. For more information on the method used for calculating the floor area of any unit, please refer to Home Construction Regulatory Authority Directive - Floor Area Calculations. Balcony and terrace area is approximate and not included in net suite area. E&O.E.



ELM  
ON  
YONGE

# 2P

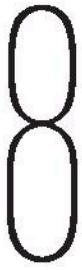
2 BEDROOM + 2 BATH  
INTERIOR: 701 SQ.FT.  
EXTERIOR: 244 SQ.FT.  
TOTAL: 945 SQ.FT.



LEVEL 9



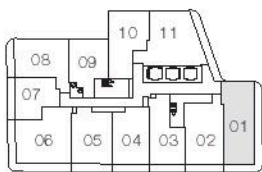
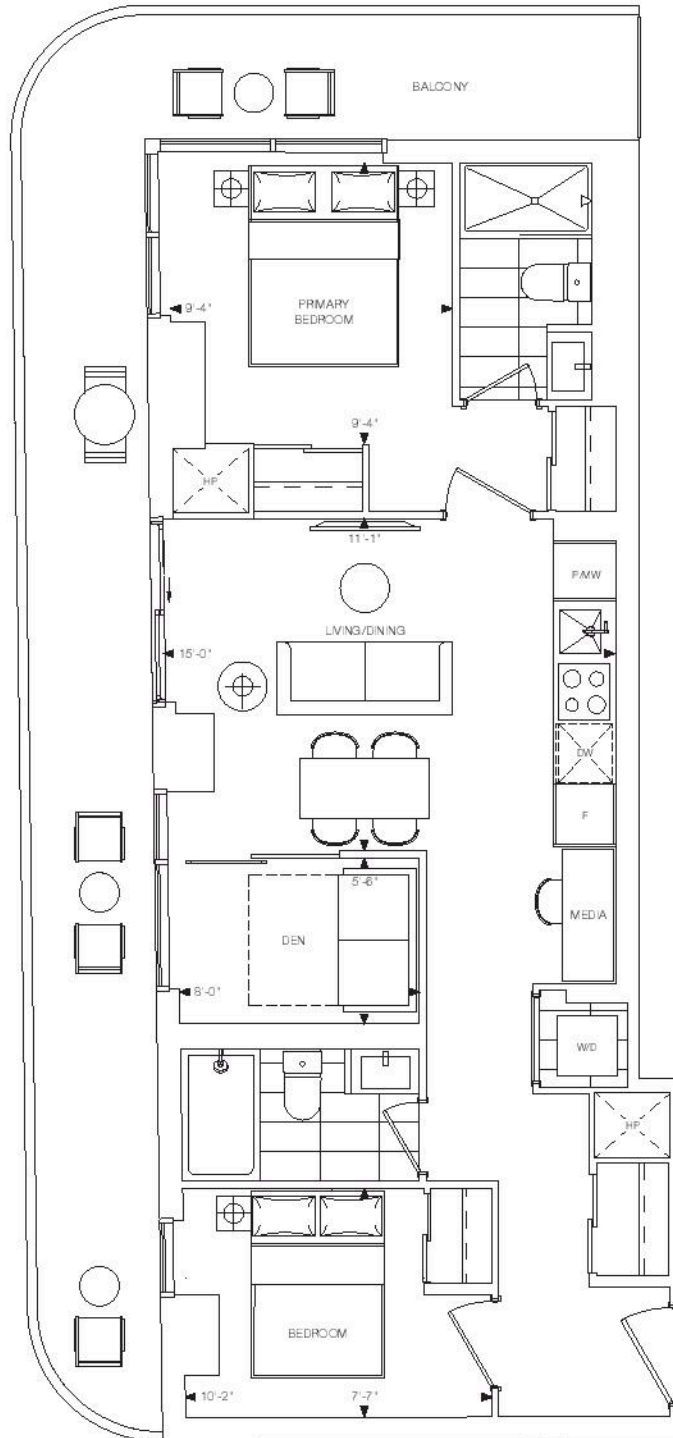
Dimensions, specifications, layouts, and materials are approximate only and are subject to change without notice. Window sizes and locations may vary. Furniture is for illustration purposes only and does not necessarily reflect the electrical plan for the suite. Suites are sold unfurnished. Actual useable floor space within the unit may be different from stated floor areas or dimensions on this plan. For more information on the method used for calculating the floor area of any unit, please refer to Home Construction Regulatory Authority Directive - Floor Area Calculations. Balcony and terrace area is approximate and not included in net suite area. E&O.E.



ELM  
ON  
YONGE

# 2B+DM

2 BEDROOM + DEN + MEDIA + 2 BATH  
INTERIOR: 715 SQ.FT.  
EXTERIOR: 255 SQ.FT.  
TOTAL: 970 SQ.FT.



LEVEL 57



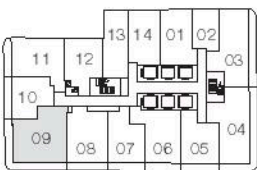
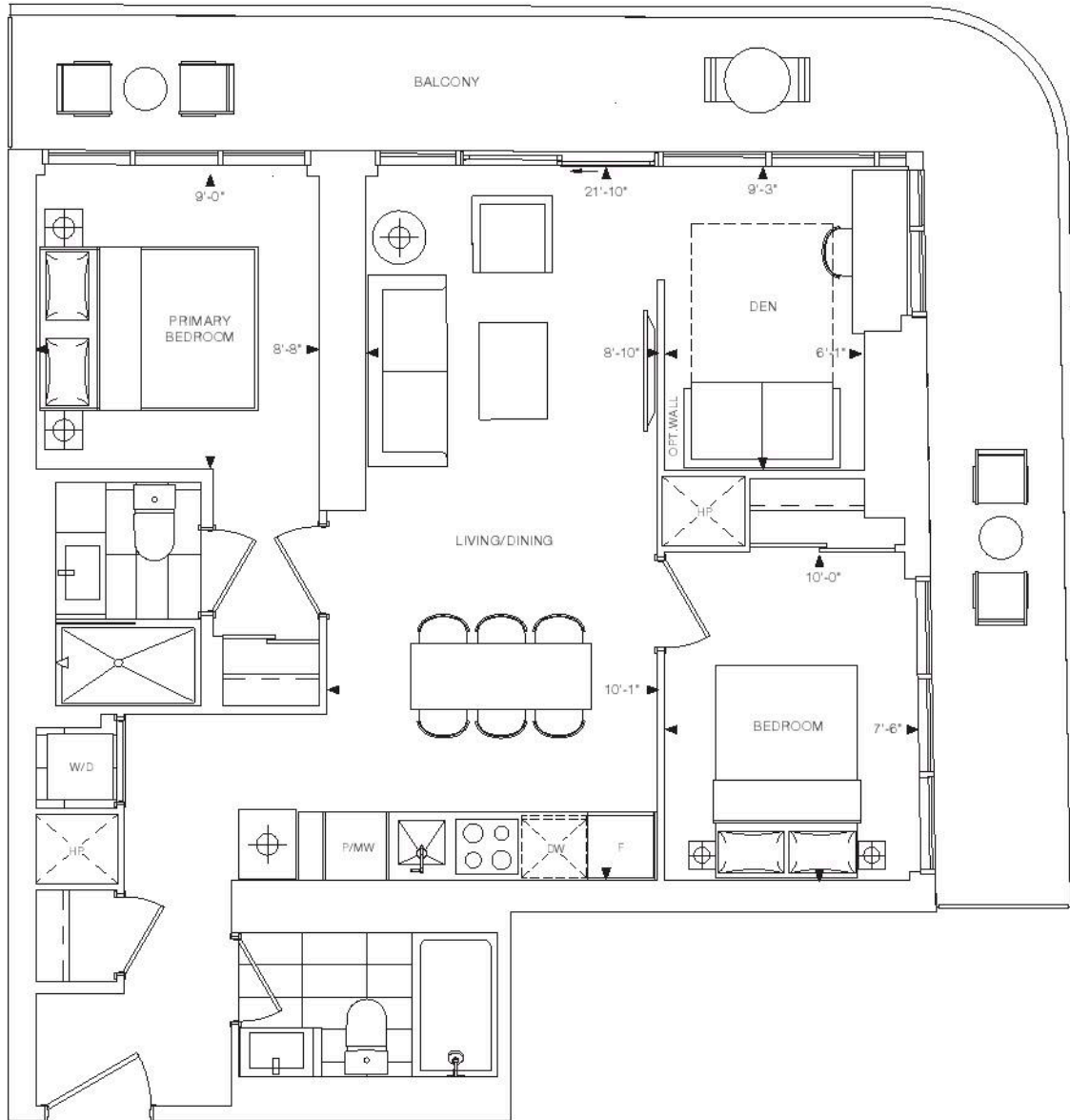
Dimensions, specifications, layouts, and materials are approximate only and are subject to change without notice. Window sizes and locations may vary. Furniture is for illustration purposes only and does not necessarily reflect the electrical plan for the suite. Suites are sold unfurnished. Actual useable floor space within the unit may be different from stated floor areas or dimensions on this plan. For more information on the method used for calculating the floor area of any unit, please refer to Home Construction Regulatory Authority Directive - Floor Area Calculations. Balcony and terrace area is approximate and not included in net suite area. E&O.E.



ELM  
ON  
YONGE

# 2R+D

2 BEDROOM + DEN + 2 BATH  
INTERIOR: 747 SQ.FT.  
EXTERIOR: 222 SQ.FT.  
TOTAL: 969 SQ.FT.



LEVEL 15

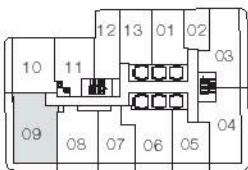
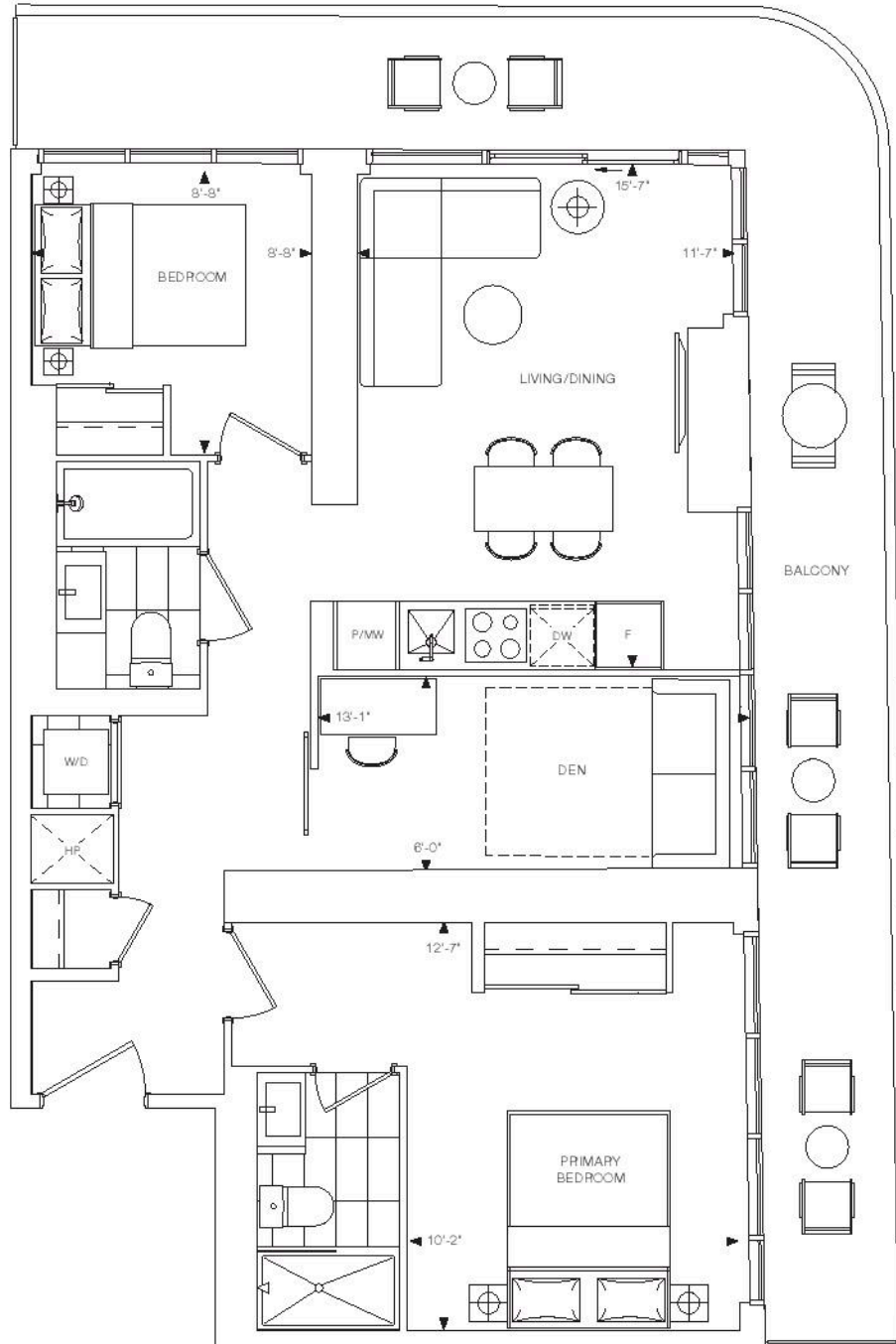




ELM  
ON  
YONGE

# 2D+D

2 BEDROOM + DEN + 2 BATH  
INTERIOR: 805 SQ.FT.  
EXTERIOR: 254 SQ.FT.  
TOTAL: 1059 SQ.FT.



LEVEL 11



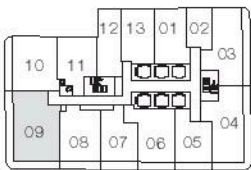
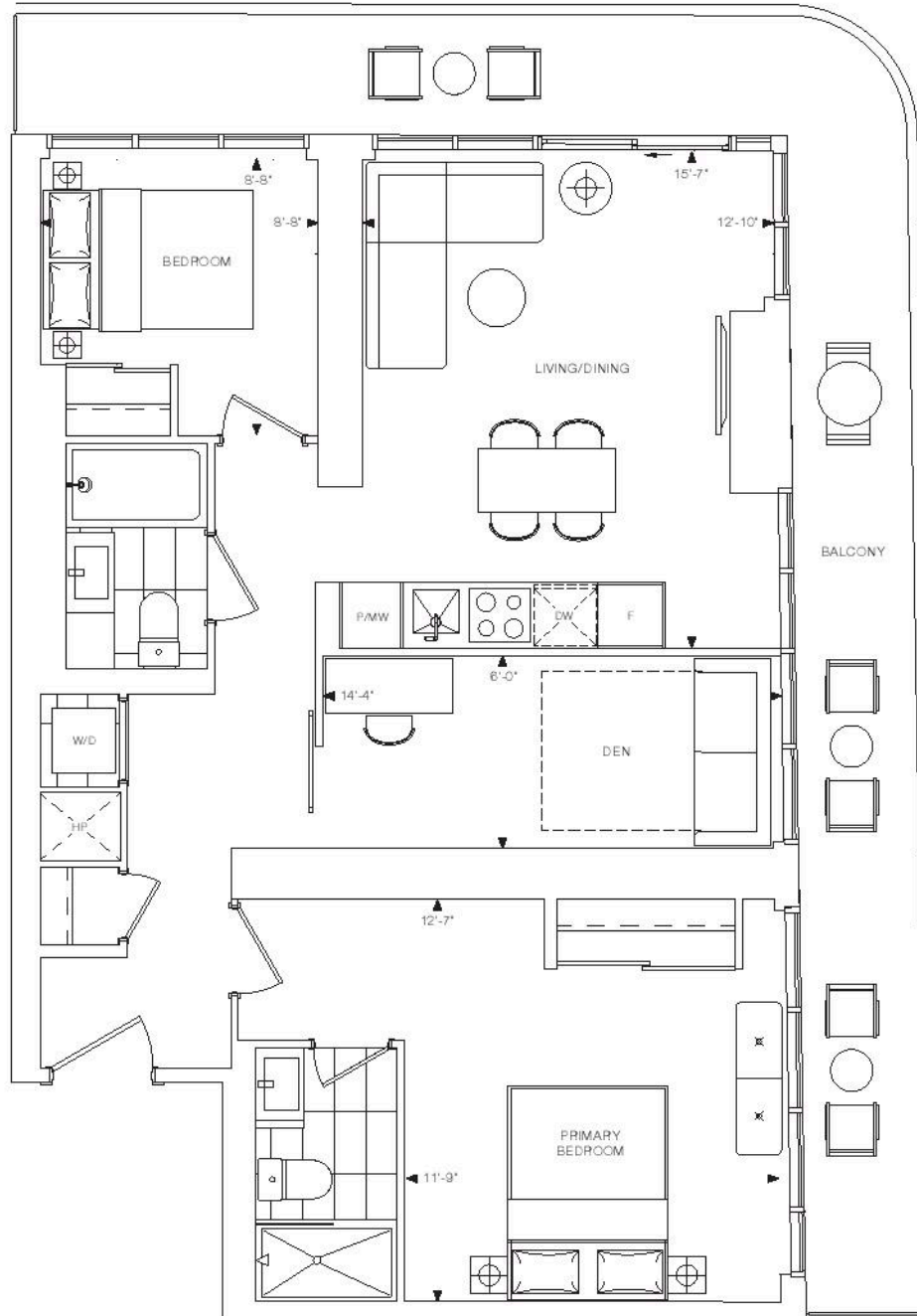
Dimensions, specifications, layouts, and materials are approximate only and are subject to change without notice. Window sizes and locations may vary. Furniture is for illustration purposes only and does not necessarily reflect the electrical plan for the suite. Suites are sold unfurnished. Actual useable floor space within the unit may be different from stated floor areas or dimensions on this plan. For more information on the method used for calculating the floor area of any unit, please refer to Home Construction Regulatory Authority Directive - Floor Area Calculations. Balcony and terrace area is approximate and not included in net suite area. E&O.E.



ELM  
ON  
YONGE

# 2E+D

2 BEDROOM + DEN + 2 BATH  
INTERIOR: 852 SQ.FT.  
EXTERIOR: 261 SQ.FT.  
TOTAL: 1113 SQ.FT.



LEVEL 12



Dimensions, specifications, layouts, and materials are approximate only and are subject to change without notice. Window sizes and locations may vary. Furniture is for illustration purposes only and does not necessarily reflect the electrical plan for the suite. Suites are sold unfurnished. Actual useable floor space within the unit may be different from stated floor areas or dimensions on this plan. For more information on the method used for calculating the floor area of any unit, please refer to Home Construction Regulatory Authority Directive - Floor Area Calculations. Balcony and terrace area is approximate and not included in net suite area. E&O.E.

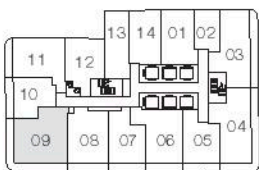




ELM  
ON  
YONGE

# 3Aa

3 BEDROOM + 2 BATH  
INTERIOR: 767 SQ.FT.  
EXTERIOR: 223 SQ.FT.  
TOTAL: 990 SQ.FT.



LEVEL 17-28



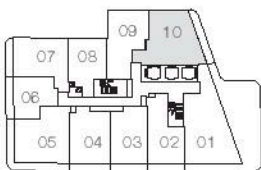
Dimensions, specifications, layouts, and materials are approximate only and are subject to change without notice. Window sizes and locations may vary. Furniture is for illustration purposes only and does not necessarily reflect the electrical plan for the suite. Suites are sold unfurnished. Actual useable floor space within the unit may be different from stated floor areas or dimensions on this plan. For more information on the method used for calculating the floor area of any unit, please refer to Home Construction Regulatory Authority Directive - Floor Area Calculations. Balcony and terrace area is approximate and not included in net suite area. E&O.E.



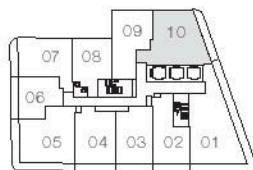
ELM  
ON  
YONGE

# 3B+Mb

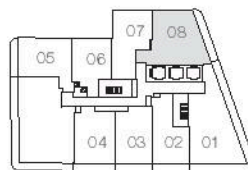
3 BEDROOM + MEDIA + 2 BATH  
INTERIOR: 813 SQ.FT.  
EXTERIOR: 121 SQ.FT.  
TOTAL: 934 SQ.FT.



LEVEL 60



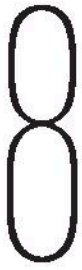
LEVEL 61-68



LEVEL 69



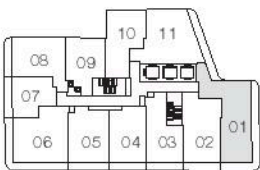
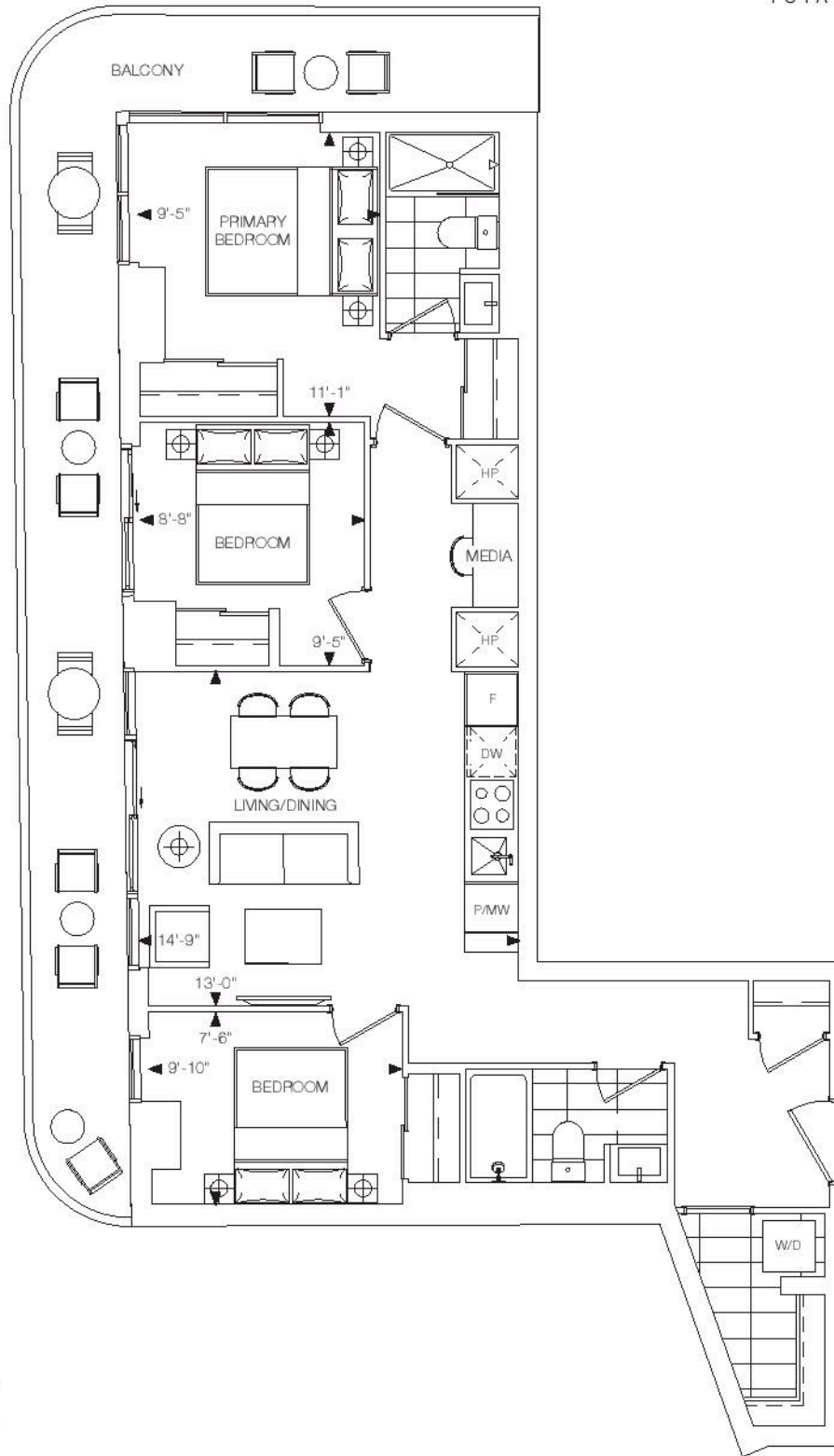
Dimensions, specifications, layouts, and materials are approximate only and are subject to change without notice. Window sizes and locations may vary. Furniture is for illustration purposes only and does not necessarily reflect the electrical plan for the suite. Suites are sold unfurnished. Actual useable floor space within the unit may be different from stated floor areas or dimensions on this plan. For more information on the method used for calculating the floor area of any unit, please refer to Home Construction Regulatory Authority Directive - Floor Area Calculations. Balcony and terrace area is approximate and not included in net suite area. E&O.E.



ELM  
ON  
YONGE

# 3C+M

3 BEDROOM + MEDIA + 2 BATH  
INTERIOR: 868 SQ.FT.  
EXTERIOR: 255 SQ.FT.  
TOTAL: 1123 SQ.FT.



LEVEL 58-59



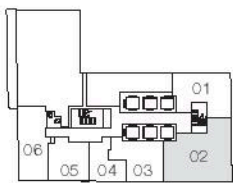
Dimensions, specifications, layouts, and materials are approximate only and are subject to change without notice. Window sizes and locations may vary. Furniture is for illustration purposes only and does not necessarily reflect the electrical plan for the suite. Suites are sold unfurnished. Actual useable floor space within the unit may be different from stated floor areas or dimensions on this plan. For more information on the method used for calculating the floor area of any unit, please refer to Home Construction Regulatory Authority Directive - Floor Area Calculations. Balcony and terrace area is approximate and not included in net suite area. E&O.E.



ELM  
ON  
YONGE

# 3D+D

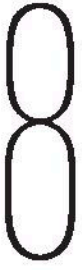
3 BEDROOM + DEN + 2 BATH  
INTERIOR: 983 SQ.FT.  
TOTAL: 983 SQ.FT.



LEVEL 6-8



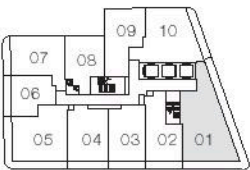
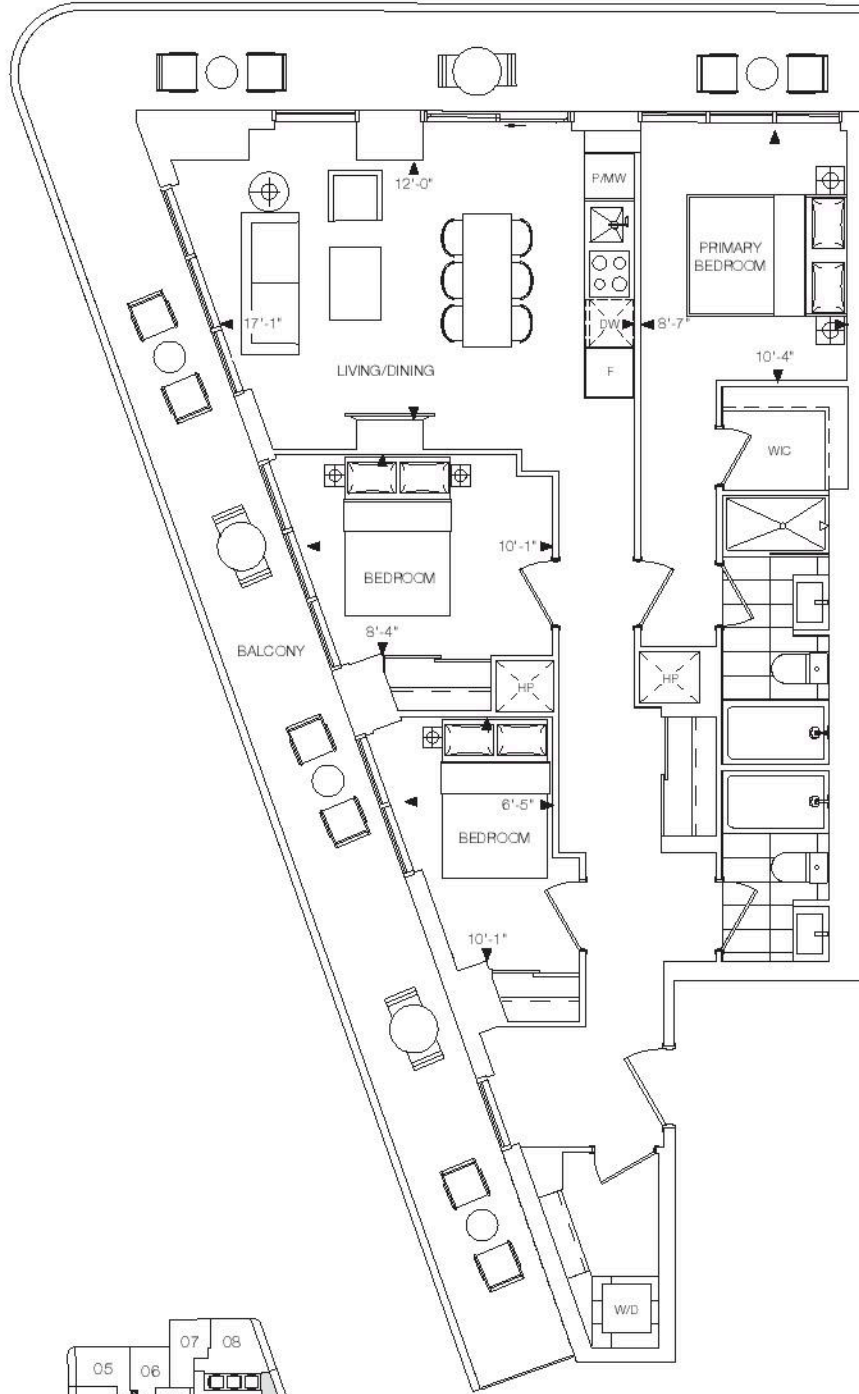
Dimensions, specifications, layouts, and materials are approximate only and are subject to change without notice. Window sizes and locations may vary. Furniture is for illustration purposes only and does not necessarily reflect the electrical plan for the suite. Suites are sold unfurnished. Actual useable floor space within the unit may be different from stated floor areas or dimensions on this plan. For more information on the method used for calculating the floor area of any unit, please refer to Home Construction Regulatory Authority Directive - Floor Area Calculations. Balcony and terrace area is approximate and not included in net suite area. E&O.E.



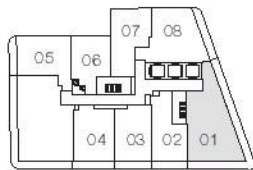
ELM  
ON  
YONGE

# 3E

3 BEDROOM + 2 BATH  
INTERIOR: 998 SQ.FT.  
EXTERIOR: 376 SQ.FT.  
TOTAL: 1374 SQ.FT.



LEVEL 61-68



LEVEL 69



Dimensions, specifications, layouts, and materials are approximate only and are subject to change without notice. Window sizes and locations may vary. Furniture is for illustration purposes only and does not necessarily reflect the electrical plan for the suite. Suites are sold unfurnished. Actual useable floor space within the unit may be different from stated floor areas or dimensions on this plan. For more information on the method used for calculating the floor area of any unit, please refer to Home Construction Regulatory Authority Directive - Floor Area Calculations. Balcony and terrace area is approximate and not included in net suite area. E&O.E.